

Music Terms & Signs

Level 1

crescendo



decrescendo



diminuendo



f

p

mf

mp

ff

pp

becoming louder

Discover more teaching resources at
www.pianodiscoveries.ca

becoming softer

becoming softer

soft

loud

moderately soft

moderately loud

very soft

very loud

fine

legato



gva



play smoothly

the end

accent

stress the note

staccato

sharply detached

slur

play legato

fermata

hold longer than
the written value

ottava

play an octave
higher or lower

tie

hold for the value
of both notes

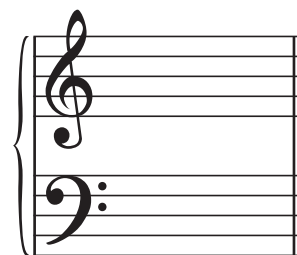
damper pedal

repeat sign

ritardando

allegro

adagio



fast

gradually slowing down

double bar line

slow

bass clef

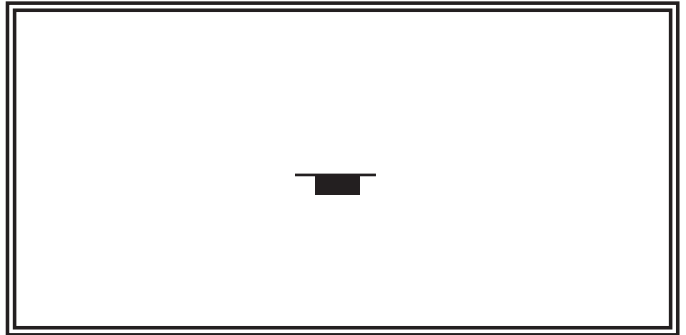
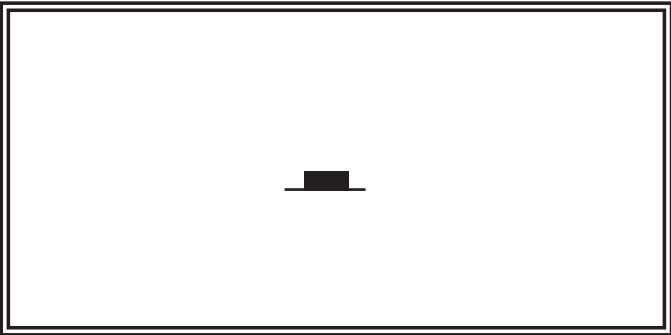
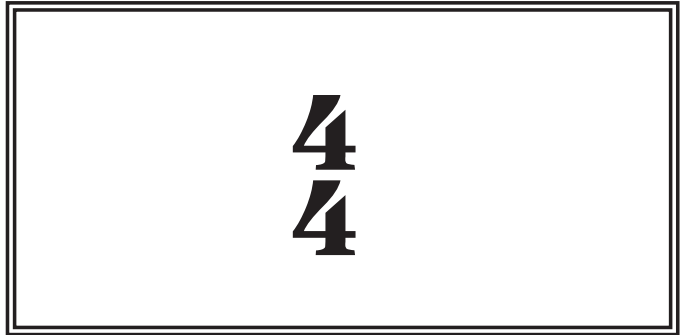
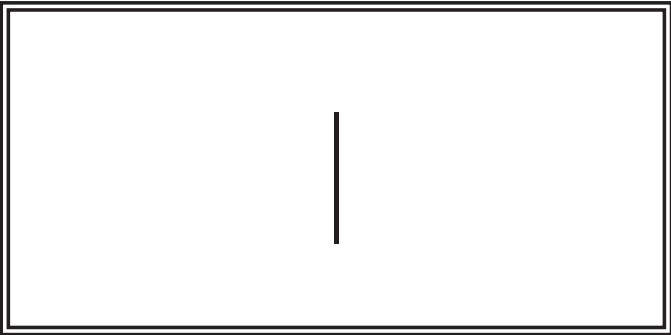
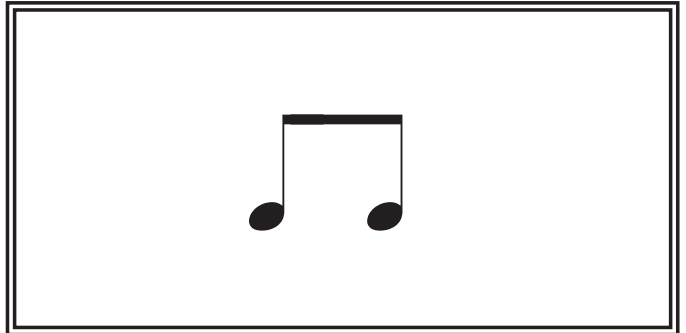
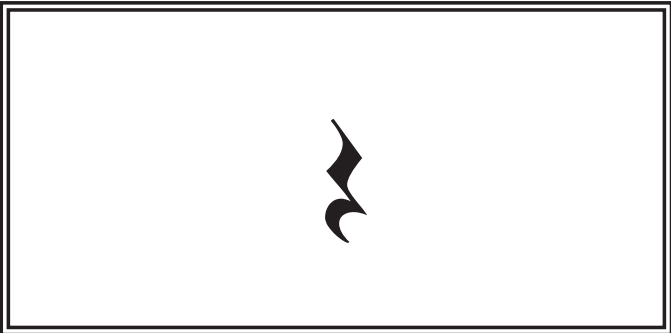
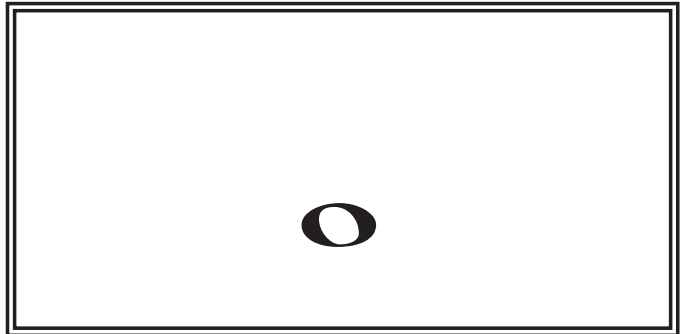
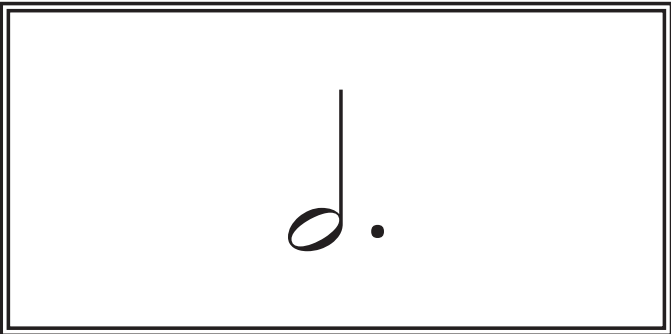
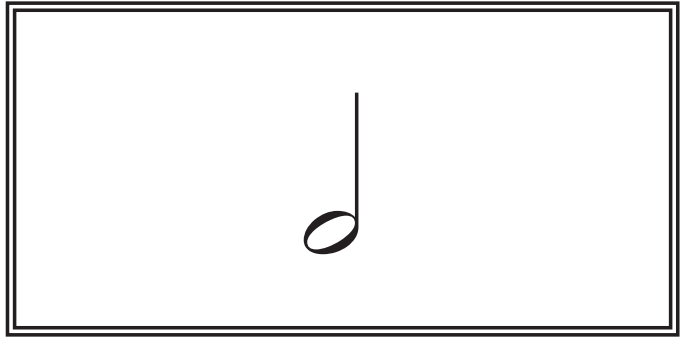
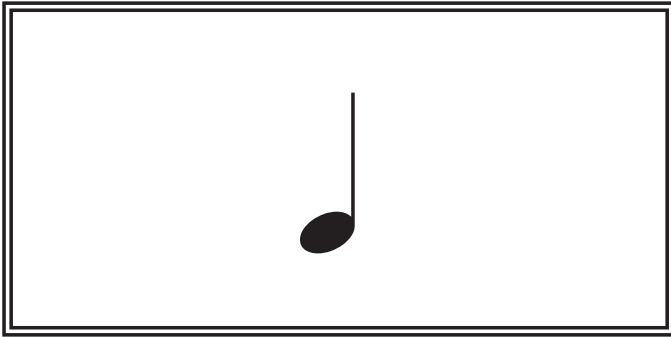
treble clef

flat

sharp

grand staff

natural
cancels a sharp or flat



half note

2 beats

quarter note

1 beat

whole note

4 beats

dotted half note

3 beats

2 eighth notes

1 beat

quarter rest

1 beat

time signature

bar line

whole rest

a whole measure
of silence

half rest

2 beats