

The Barnyard Friends

A playful approach to landmark
note reading on the grand staff

Anne Crosby Gaudet, B.A. M.Mus.

Copyright © 2009 by Anne Crosby Gaudet
No part of this publication may be copied or reproduced
www.pianoanne.ca

Dear teachers,

The Barnyard Friends will give your students a playful strategy for learning the basics of landmark note reading on the grand staff. A solid foundation in note reading develops happy, successful piano students. Use it along with any beginner piano method.

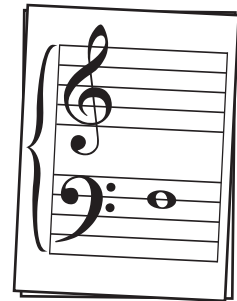
Finding ways to reinforce concepts from a variety of angles is important pedagogy. So in addition to using the activity book, you may also choose from the following teaching aids as part of your instruction plan.

BARNYARD BOARD & FRIENDS

The Barnyard Board is laminated for dry erase marker activities. Use the colorful Barnyard Story Scene to practice placing the Friends on the correct lines and spaces. Or flip the board to a grand staff where students may practice drawing notes and clefs along with the visual aid of a piano keyboard.

FLASHCARDS

The Barnyard Friends approach gives students strategies for learning Bass C up to Treble C, that's fifteen flashcards. Encourage your students to name and play their Flashcards at home. Gradually add notes as they are introduced in the book.



VISIT YOUTUBE

There are three delightful cartoon animations available on YouTube for you to watch along with your students. Just type in the title and you will easily find us. It's just another way to add a spark of fun to your lessons.

Video #1 - "Gina and the Treble Clef"

Video #2 - "Farmer Fred and the Bass Clef"

Video #3 - "The Barnyard Friends and the Grand Staff"

I invite you to watch the cartoons before beginning the activity pages. Enjoy!

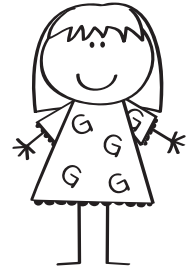
Happy teaching,
Anne Crosby Gaudet

THE TREBLE CLEF

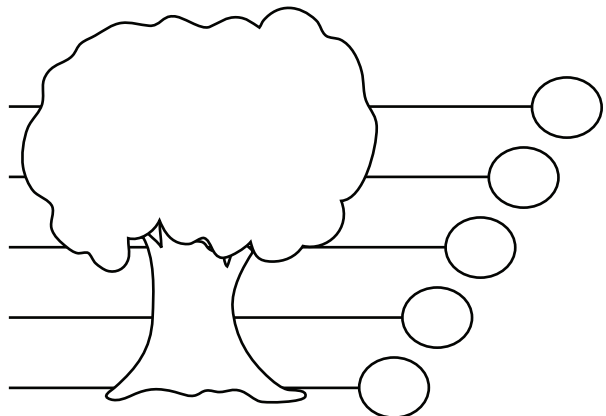
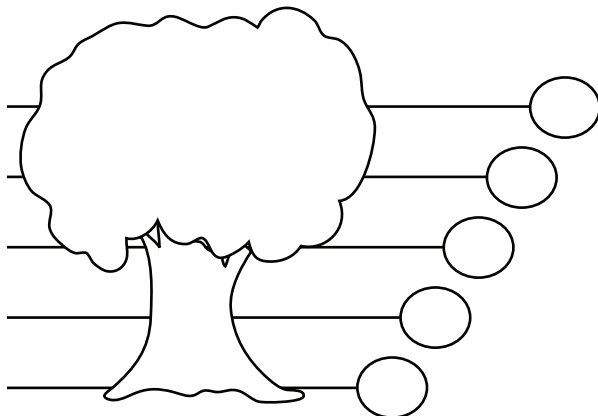
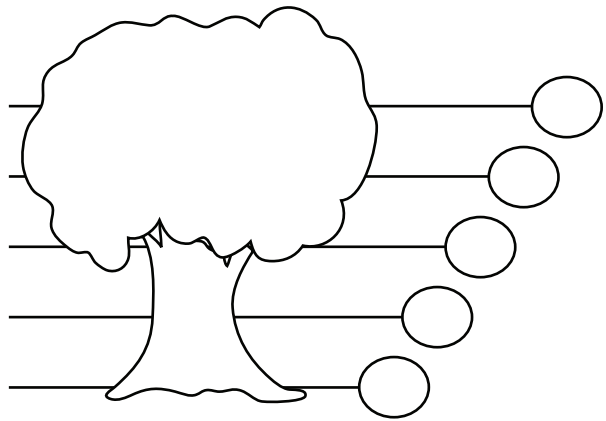
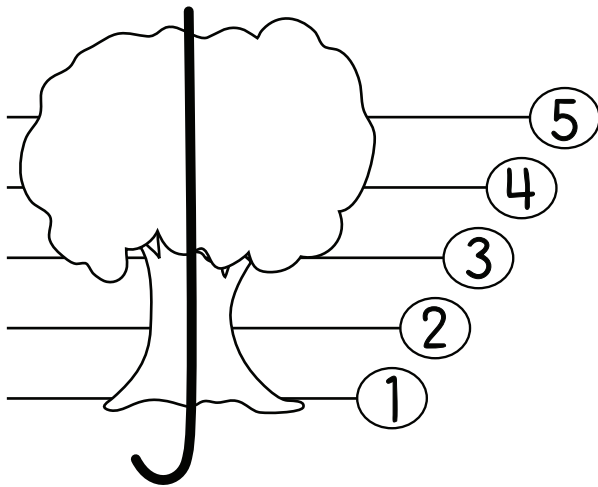


Watch the YouTube video called "Gina and the Treble Clef".
Here are the words so you can sing along with Gina.

Treble Clef, a fancy letter G.
Use it for the high notes,
way up in the sky notes.
Treble Clef, a fancy letter G.



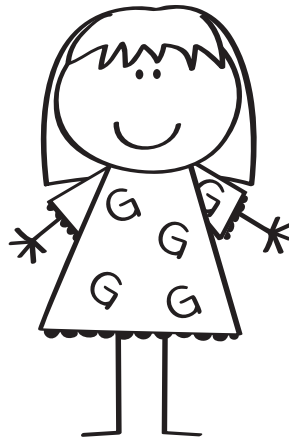
Number the five lines. Draw the rope in each tree.



MEET GINA AND THE TREBLE CLEF

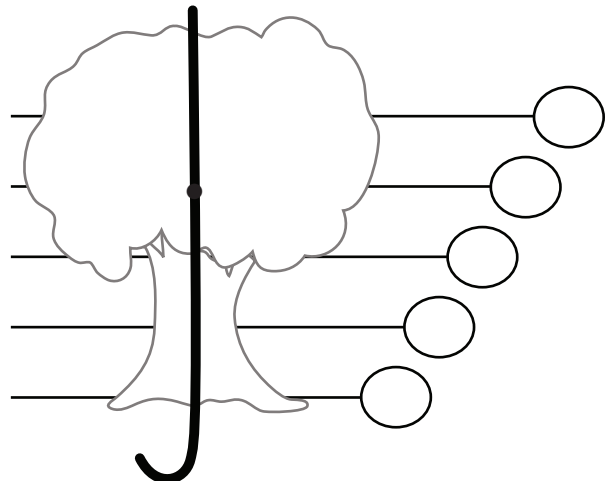
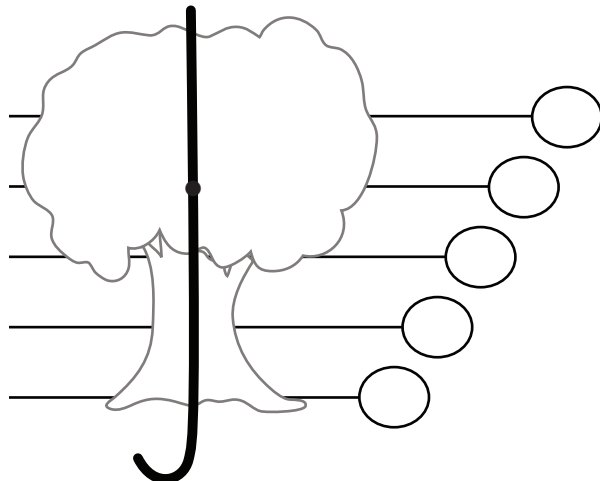
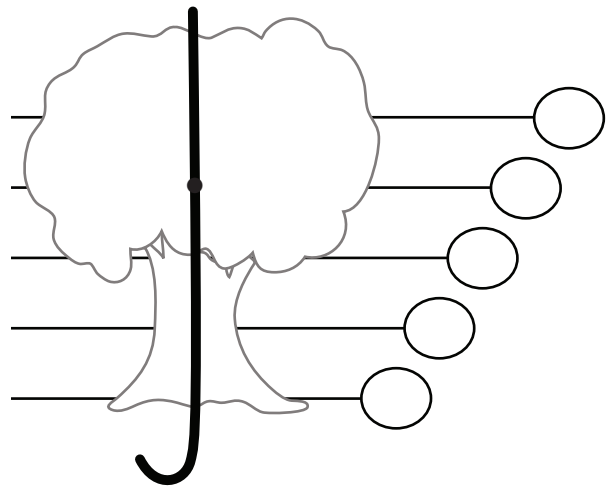
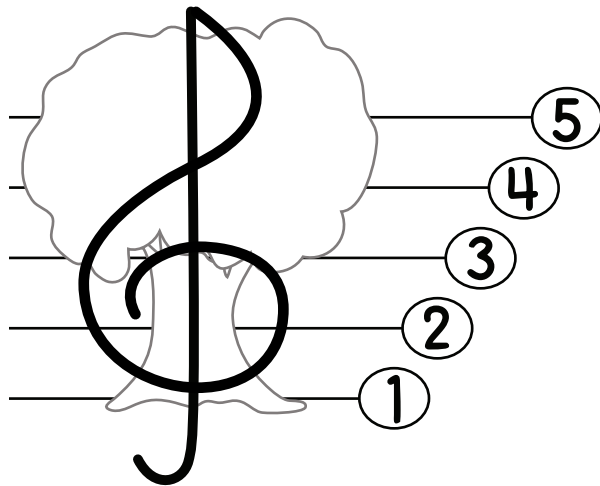
Oh we swing it to the right
and we swing it to the left.

Touch the ground,
and spin it all around.

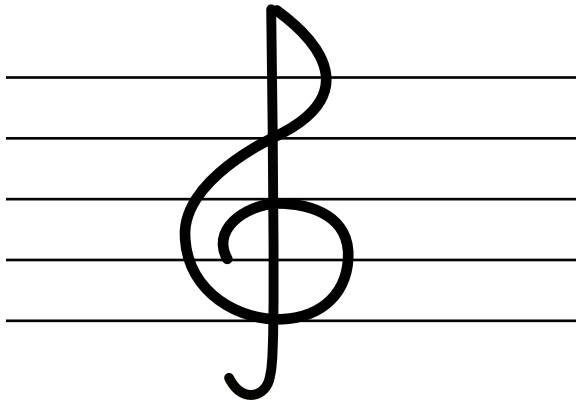


My name is Gina.
Think of me every
time you draw a
treble clef.

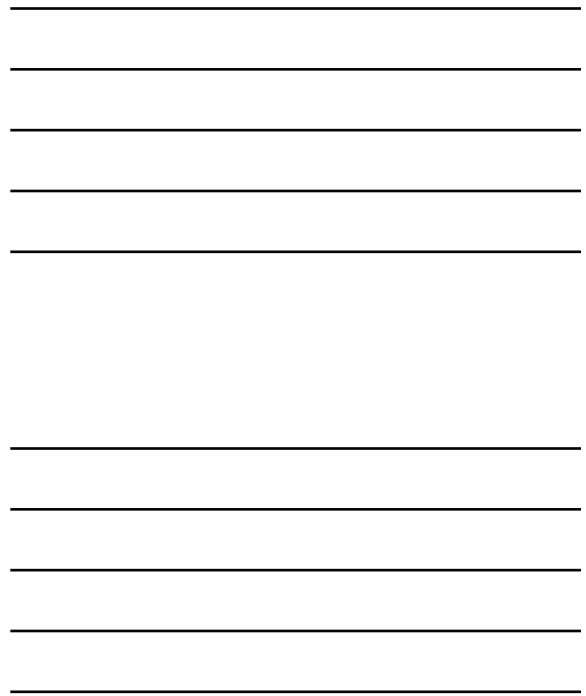
Number the 5 lines and complete each treble clef.



Draw seven terrific treble clefs.



start here



Now try some smaller treble clefs.



FARMER FRED AND THE BASS CLEF



Watch the YouTube video called "Farmer Fred and the Bass Clef". Here are the words so you can sing along.

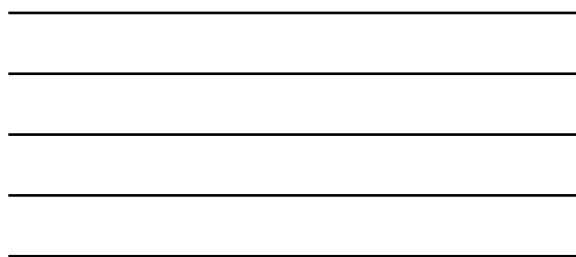
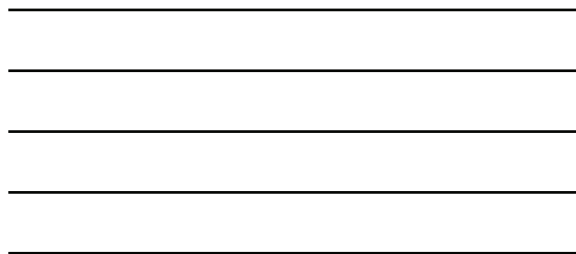
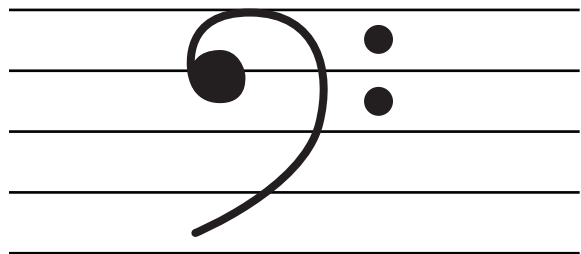
Bass Clef, singing down low,
Used to be a letter F,
Deep and down below, oh
Bass Clef!

Number the five lines. Trace the bass clefs. Remember the two gate posts.

Three sets of five-line musical staves are arranged in a grid. Each staff has a dashed bass clef for tracing. To the left of each staff is a small illustration of a tractor with a farmer on it. To the right of each staff are five circles, one on each line, representing gate posts. The first two sets have dashed circles for the gate posts, while the third set has solid circles.



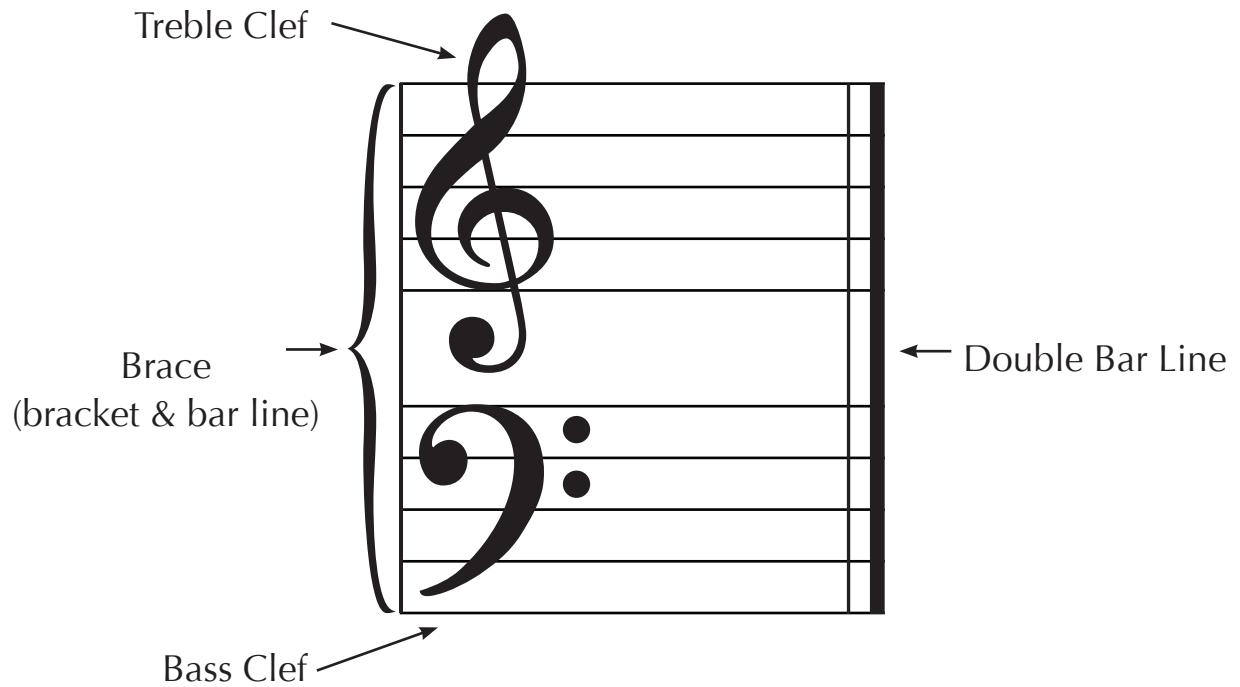
Draw seven beautiful bass clefs!



Now try some smaller bass clefs.



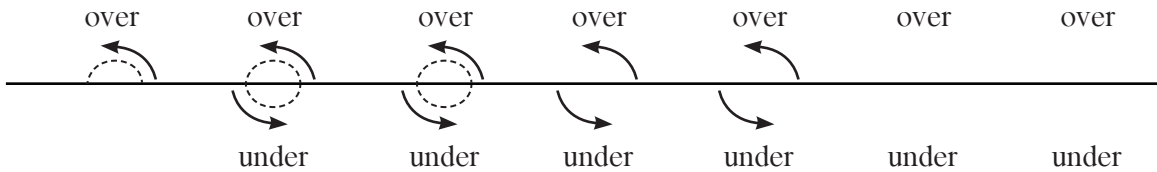
THE GRAND STAFF



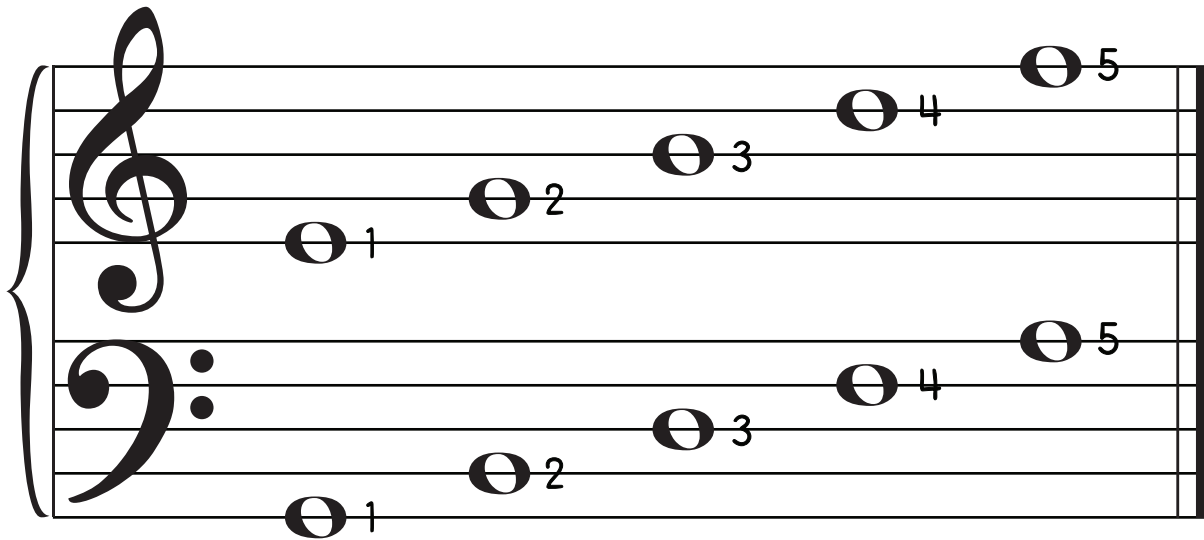
Draw all of the parts that make the Grand Staff. Please use a ruler.

LINE NOTES

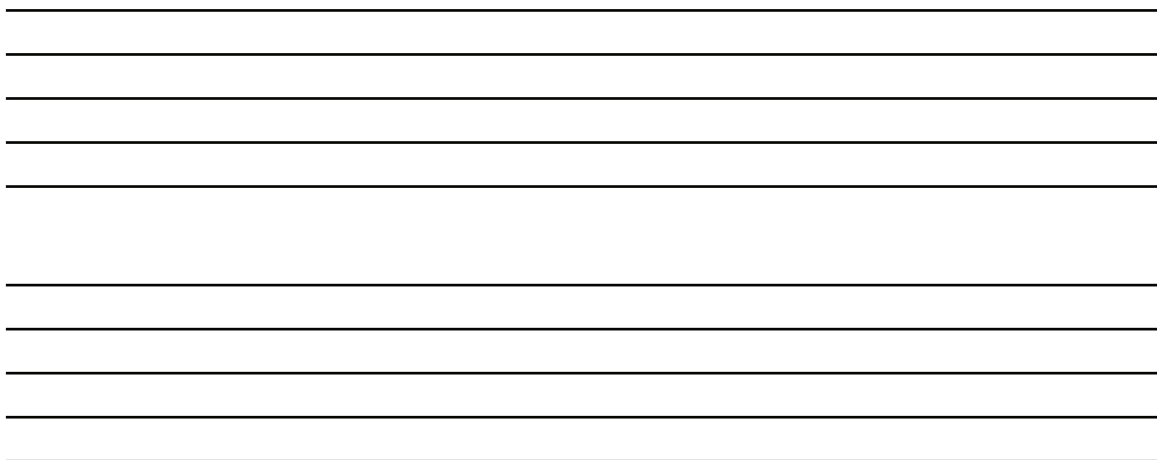
Practice drawing line notes.



There are 5 line notes in each clef.

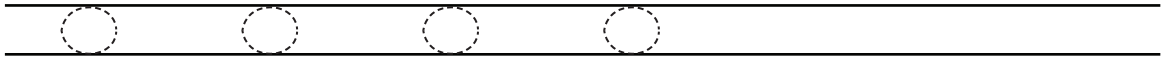


Complete the Grand Staff. Draw a note on every line.

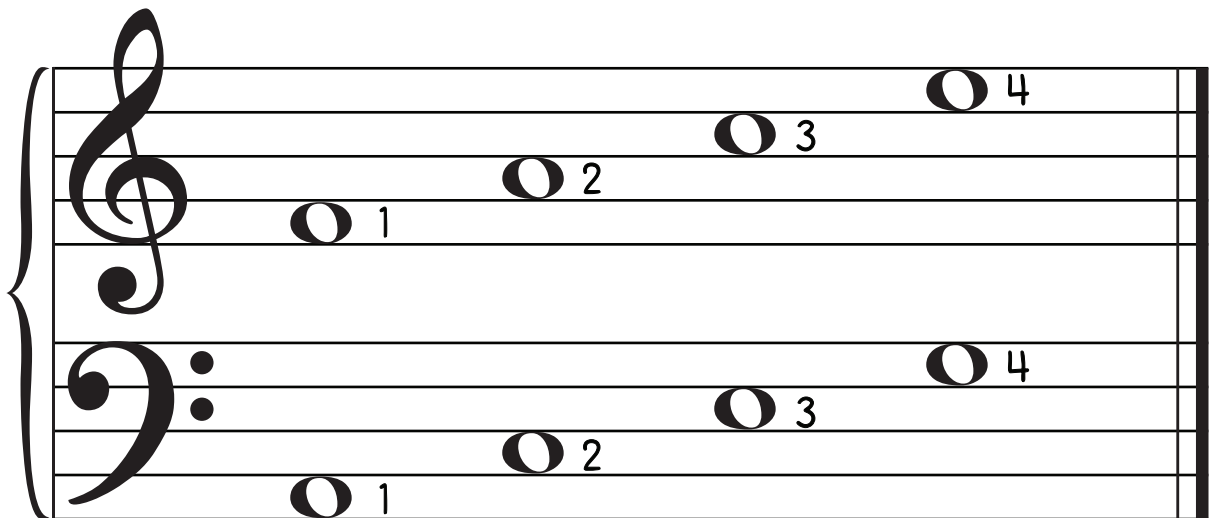


SPACE NOTES

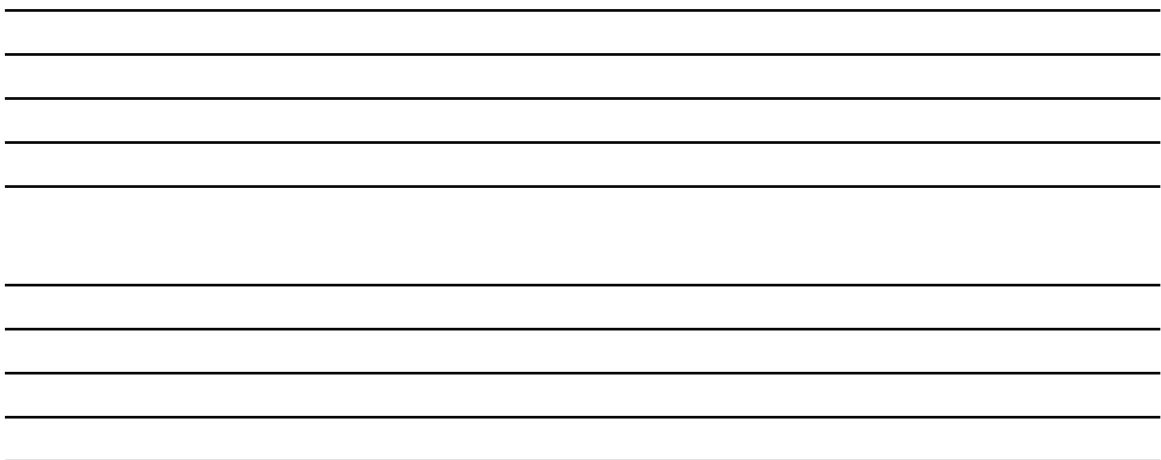
Practice drawing six space notes.



There are 4 space notes in each clef.

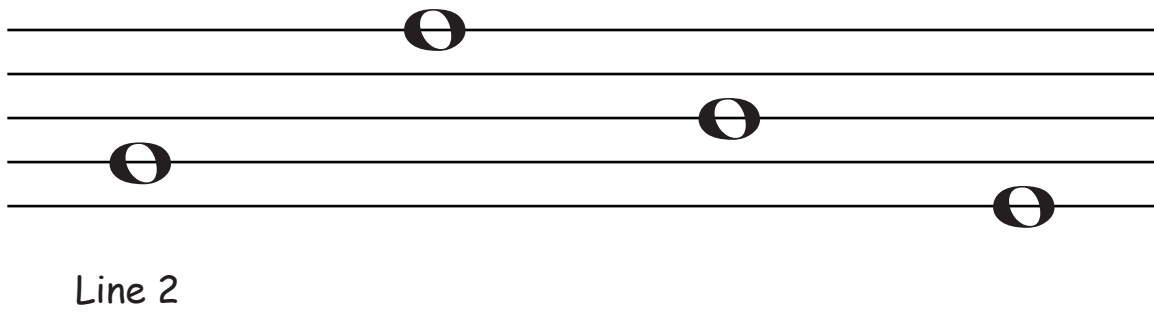


Complete the Grand Staff. Draw a note in every space.



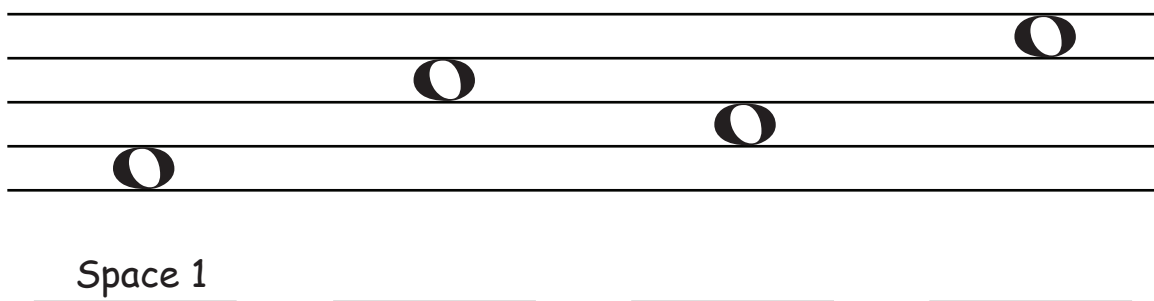
LINE NOTES & SPACE NOTES

What kind of notes are these? Fill in the blanks



A musical staff with five lines. Four whole notes are placed on the lines: the first on the second line, the second on the fourth line, the third on the first line, and the fourth on the third line.

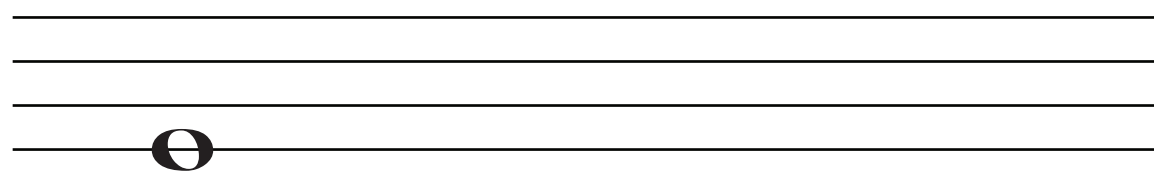
Line 2 _____ _____ _____



A musical staff with five lines. Four whole notes are placed on the spaces: the first on the first space, the second on the third space, the third on the second space, and the fourth on the fourth space.

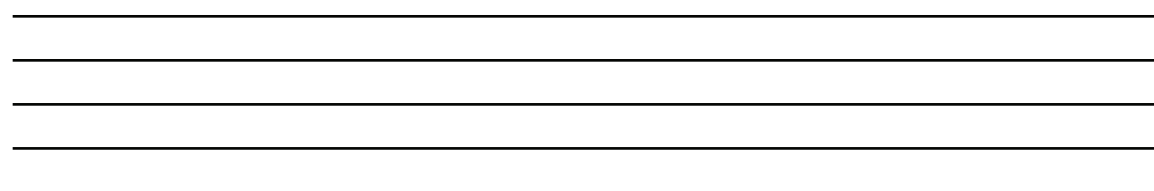
Space 1 _____ _____ _____

Draw whole notes on the correct line or space.



A musical staff with five lines. A single whole note is placed on the second line.

Line 2 Line 5 Space 3 Line 1



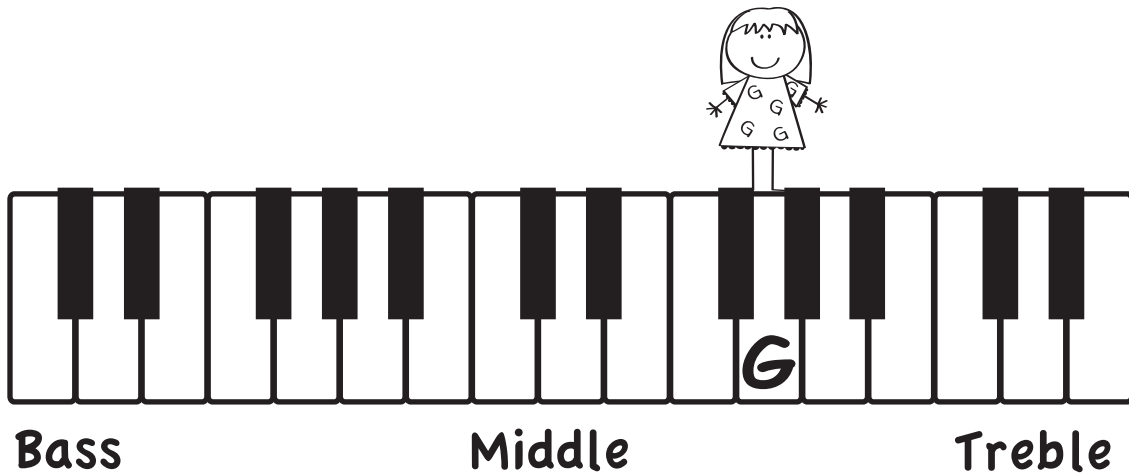
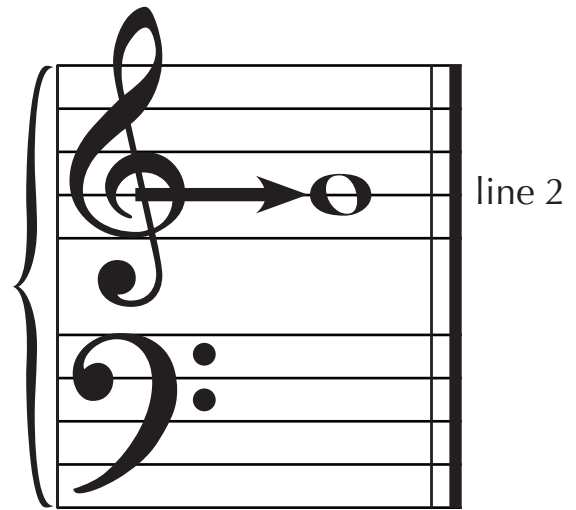
A blank musical staff with five lines.

Space 2 Line 4 Line 3 Space 4

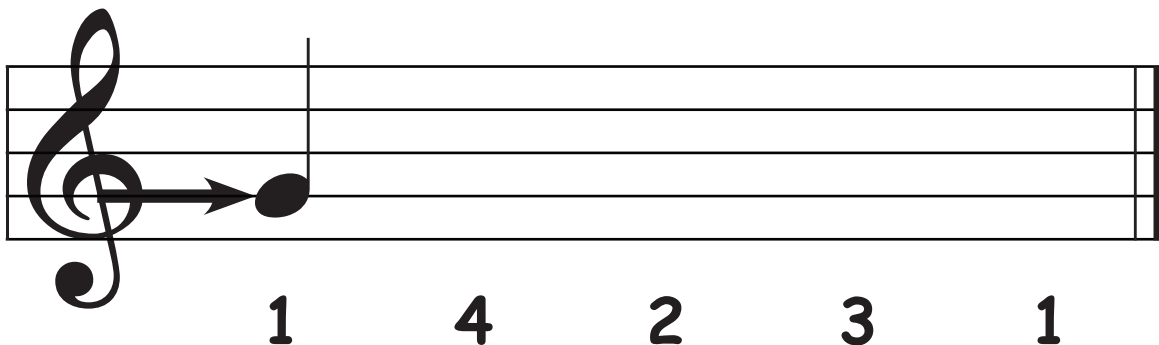
GINA ~ TREBLE G



When **Gina** makes a treble clef she says, "touch the ground and spin it all around". Her note **G** hides in that treble clef curl.

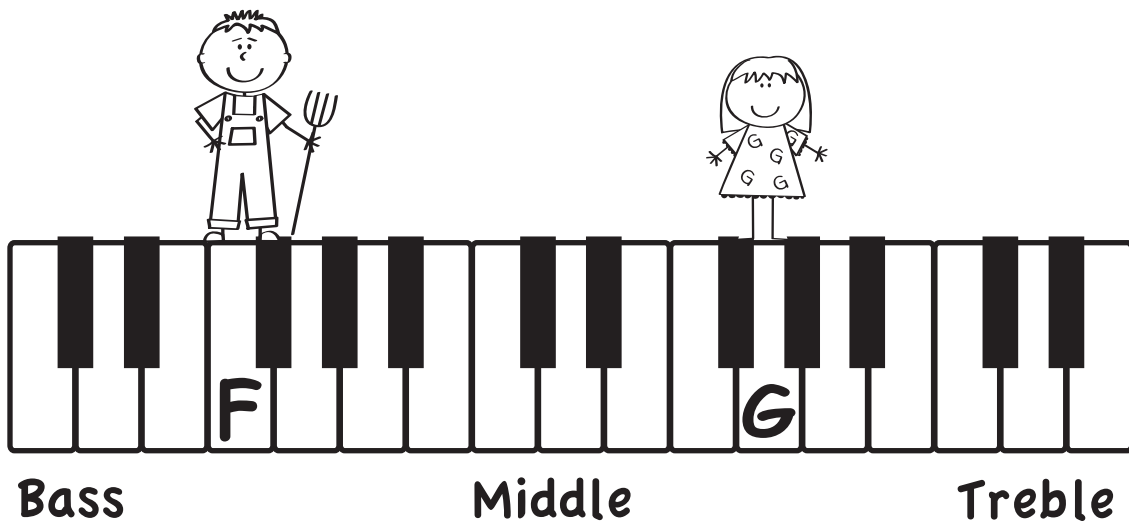
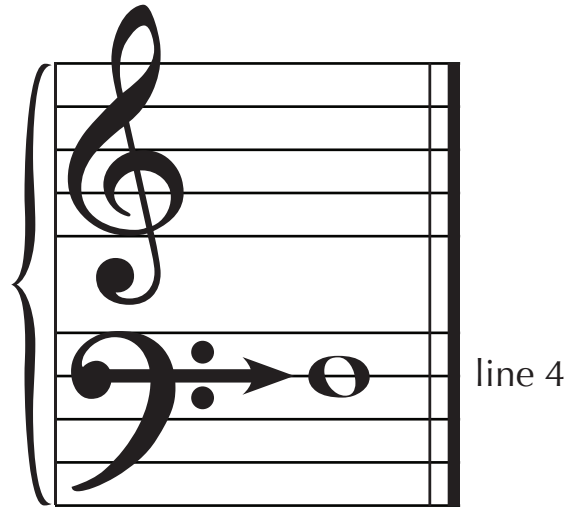
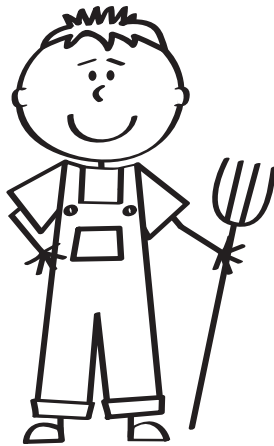


Practice drawing **Treble G** on **line 2**. The number tells you how many beats so you know what kind of note to draw.

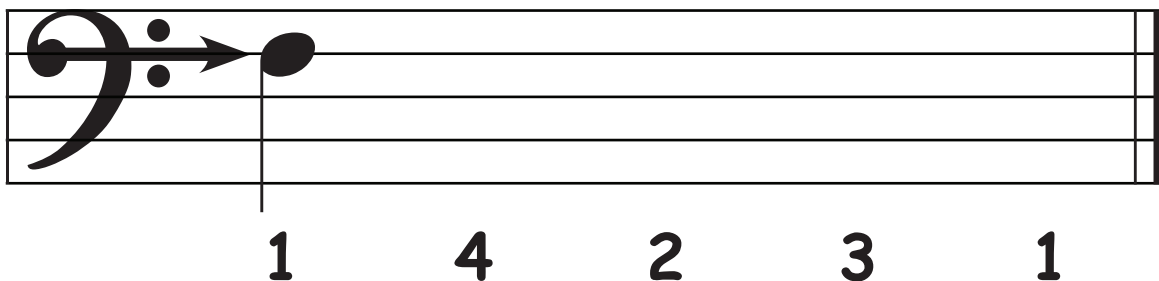


FARMER FRED ~ BASS F

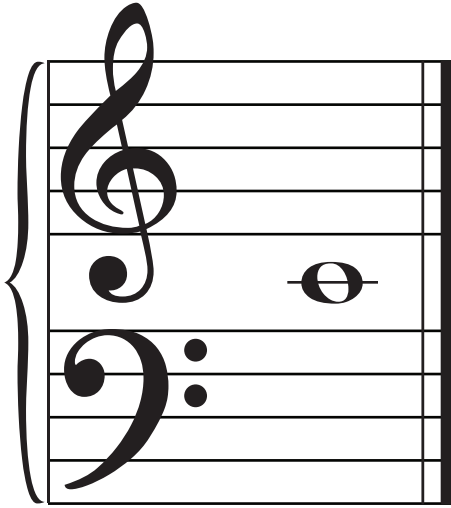
Farmer Fred parks his tractor in the bass clef. His note, **F** walks between the two gate posts and out into the field on line 4.



Practice drawing **Bass F** on **line 4**. The number tells you how many beats so you know what kind of note to draw.

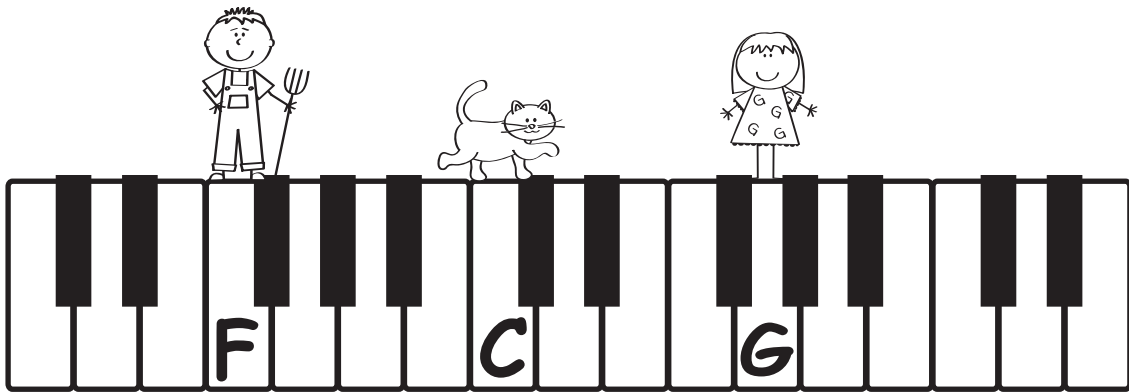
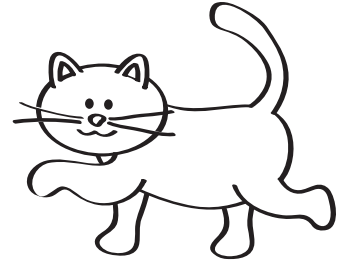


CICI THE CAT ~ MIDDLE C

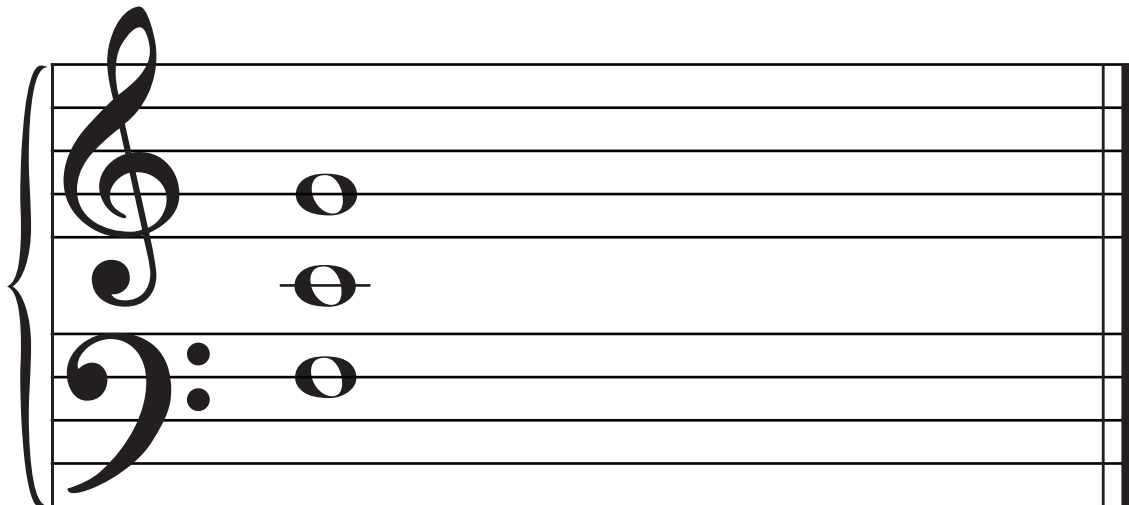


Cici the Cat likes to be right in the middle of things. You'll find her between Gina and Farmer Fred.

Her note, **Middle C** has its own special leger line. Imagine Cici's lovely, long whiskers.



Practice drawing **Treble G**, **Bass F** and **Middle C**. Repeat three times.

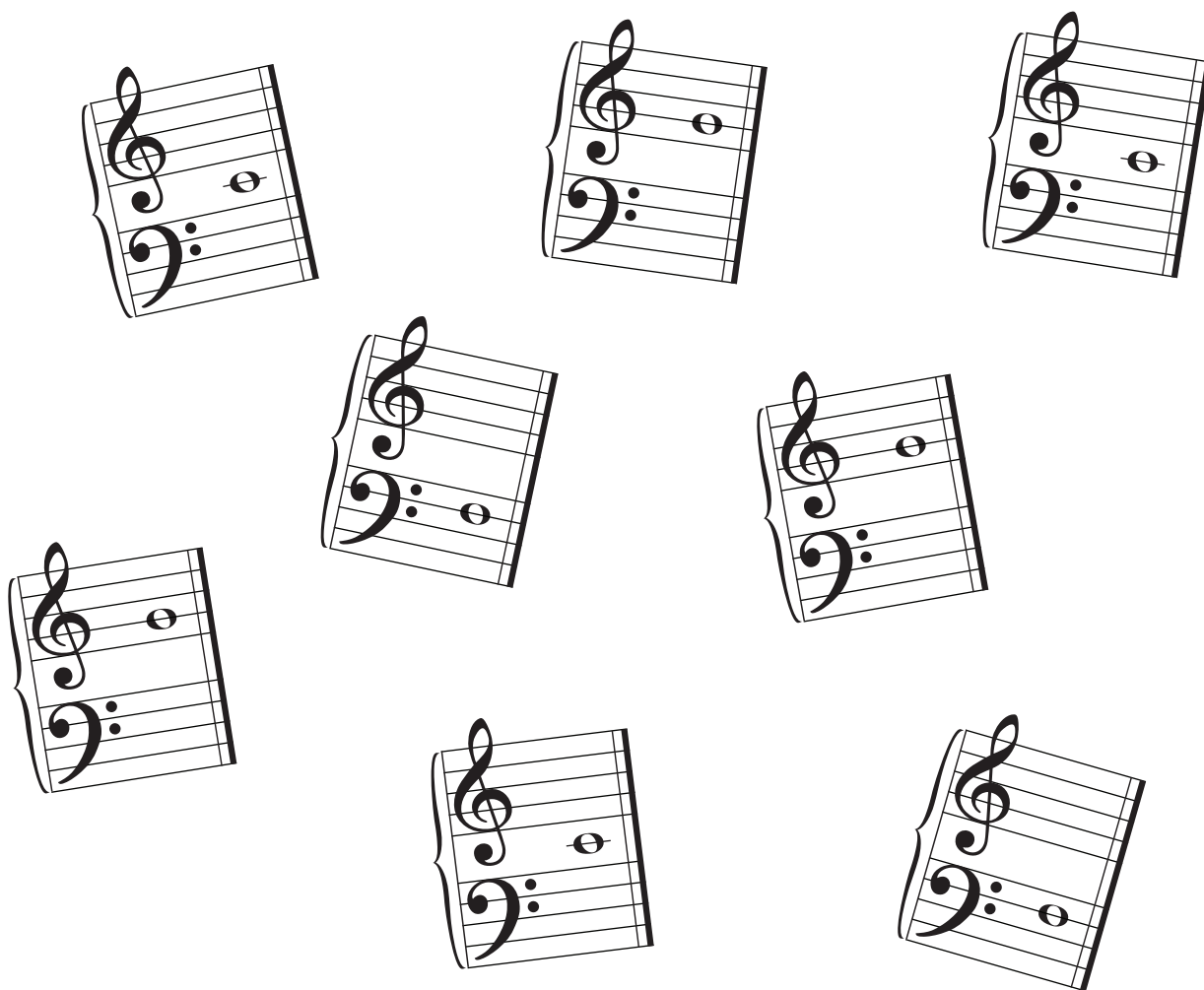
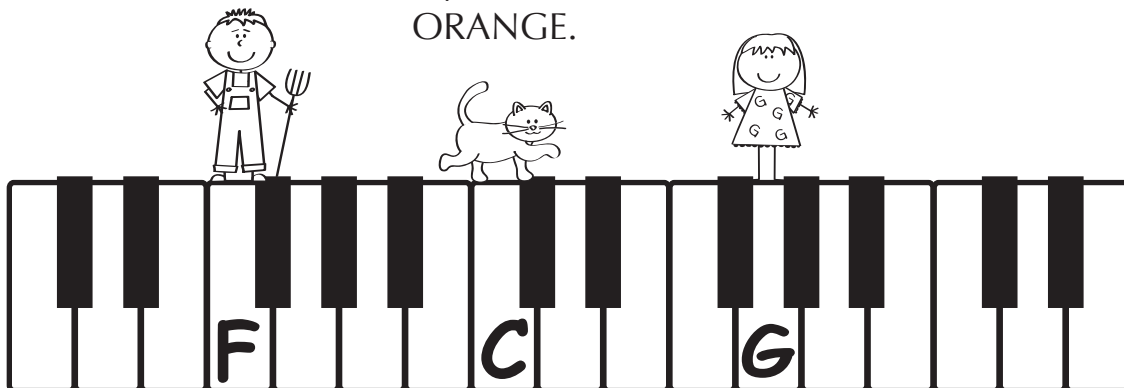


KNOW YOUR BARNYARD FRIENDS

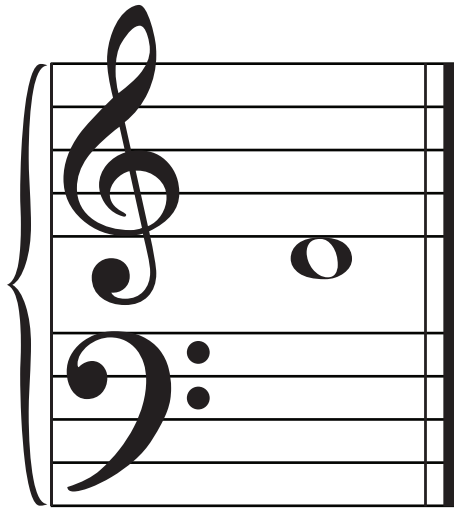
Draw lines to my note with BLUE.

Draw lines to my note with ORANGE.

Draw lines to my note with RED.

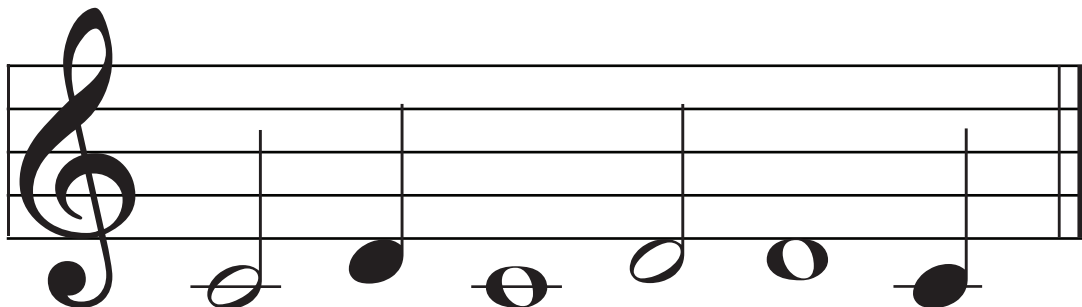
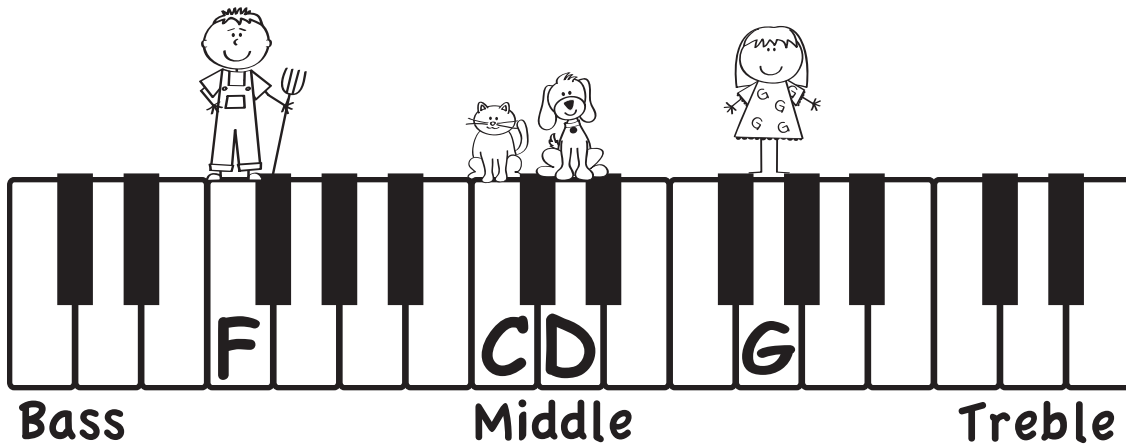


DROOPER THE DOG ~ D



Meet Gina's dog named **Drooper**.
He likes to hang around outside
the barn.

See how his note **D**
hangs from line 1
in the treble clef.



Name the note	<u>C</u>	—	—	—	—	—
How many beats?	<u>2</u>	—	—	—	—	—

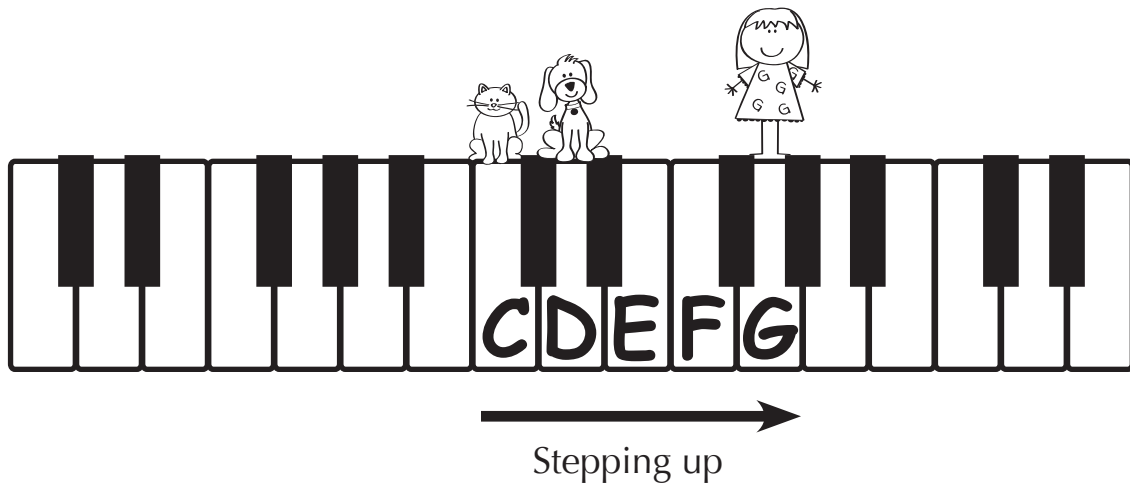
LET'S PRACTICE

Draw a treble clef. Name these notes.

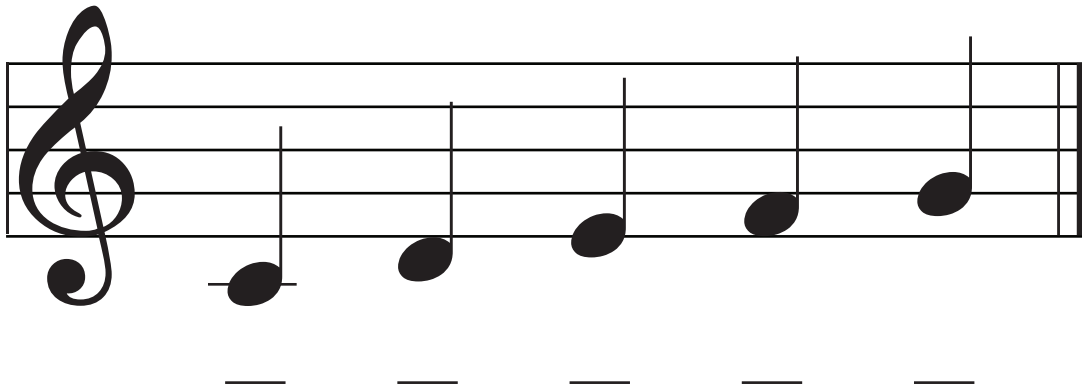
Draw the note that matches each Barnyard Friend. Name each note below.

Name these notes.

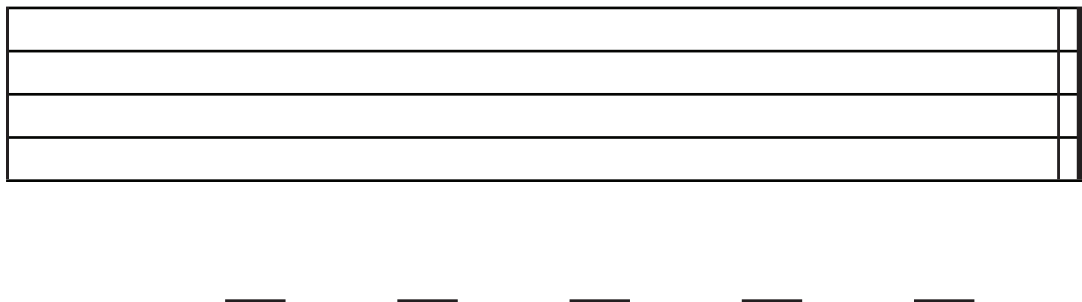
STEPPING UP



Name these stepping up notes.



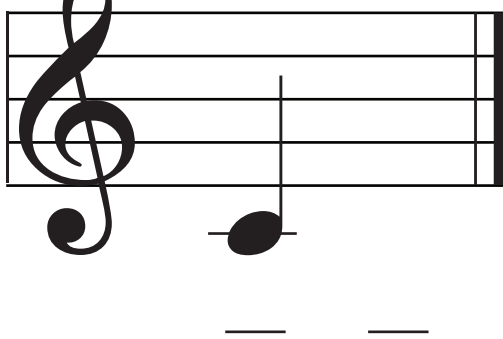
Copy the treble clef and C - D - E - F - G stepping up notes.



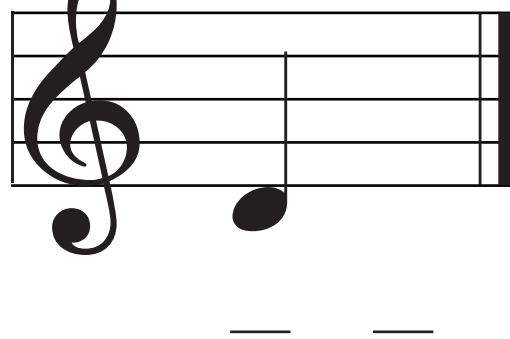
WATCH YOUR STEP!

Draw the stepping up or stepping down note. Name both notes.

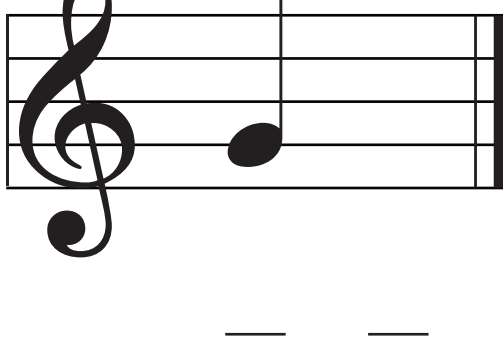
Step up



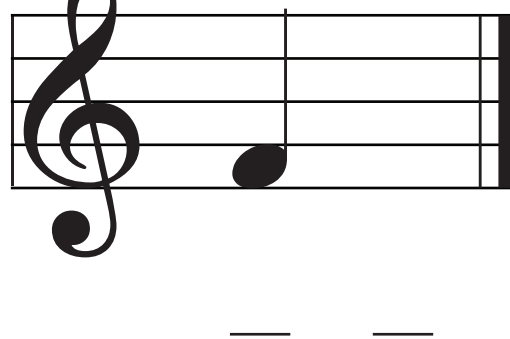
Step up



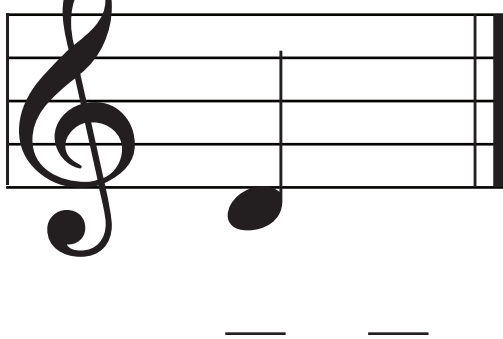
Step down



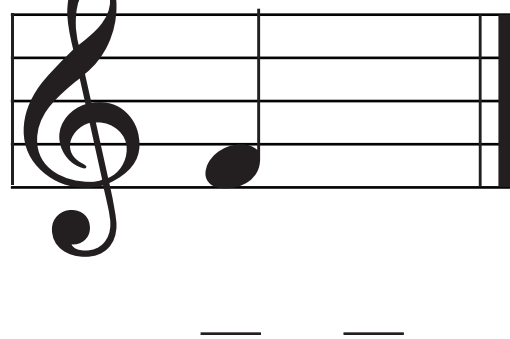
Step down



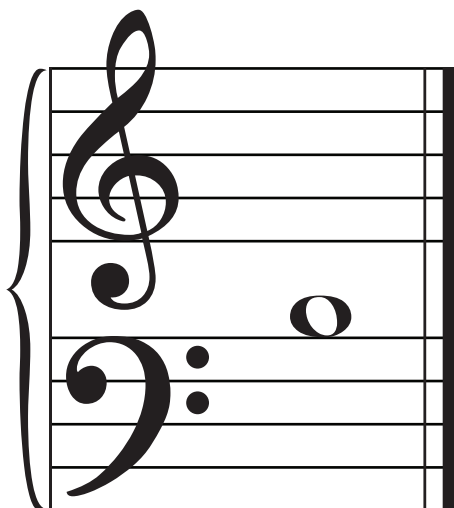
Step down



Step up

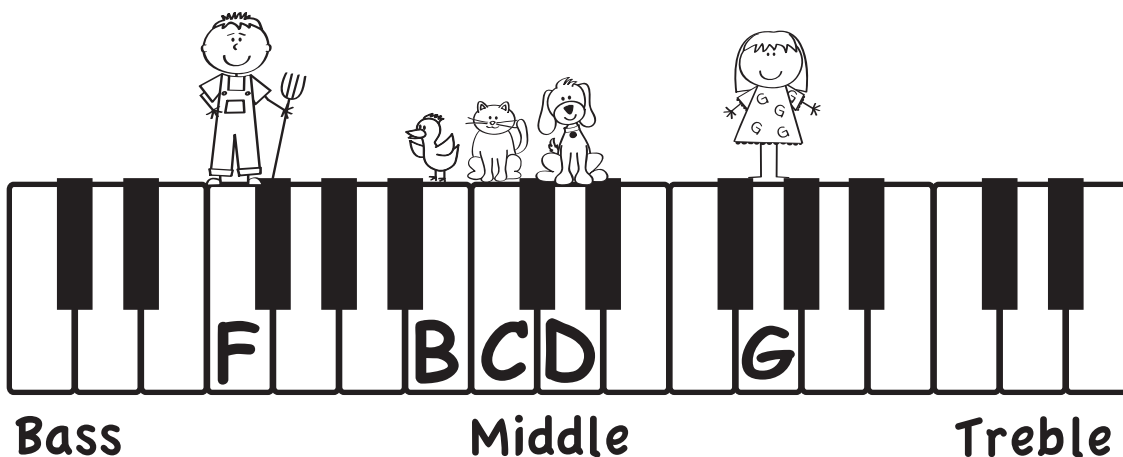
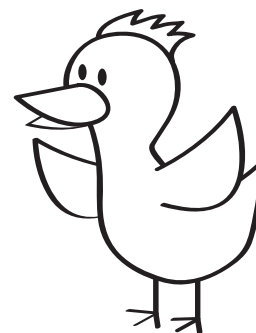


BUDDY THE BLUEBIRD ~ B

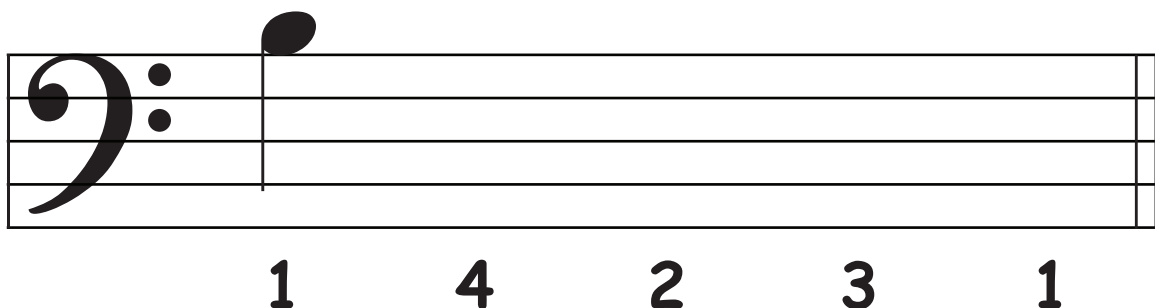


Buddy the Bluebird
flies down and sits
on the fence.

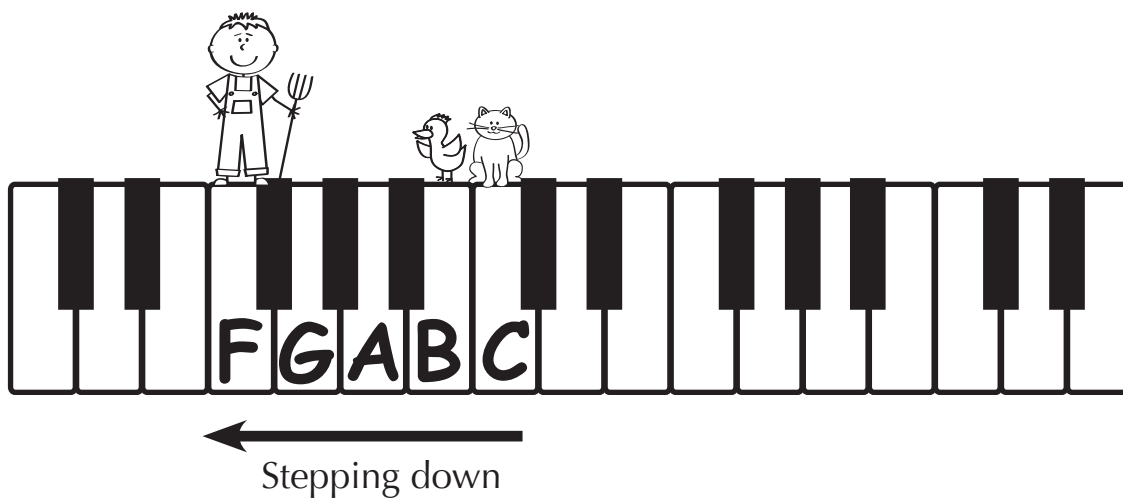
See how Buddy's note **B**
sits on the top line in the
Bass Clef.



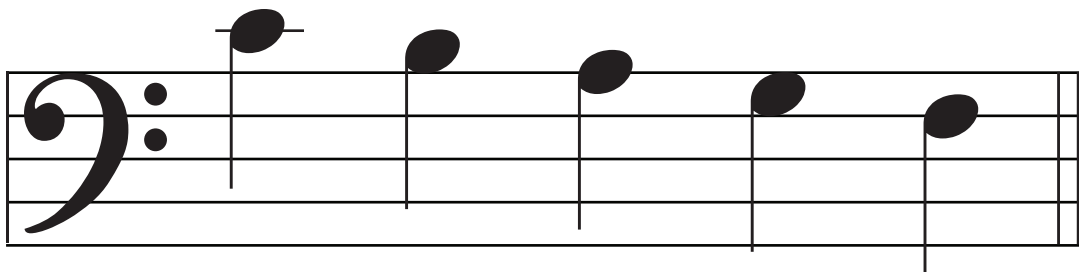
Practice drawing the note **B** for **Buddy the Bluebird**. The number tells you how many beats so you know what kind of note to draw.



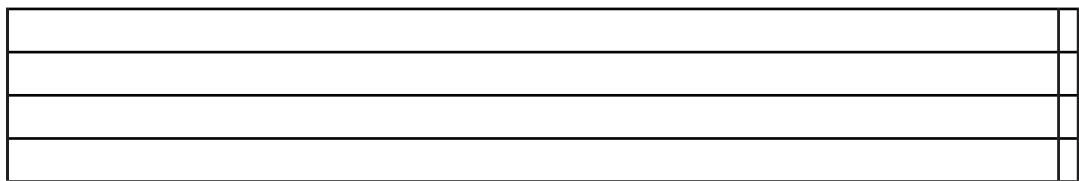
STEPPING DOWN



Name these stepping down notes.

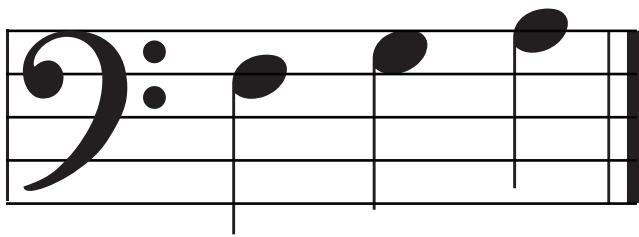


Copy the bass clef and C - B - A - G - F stepping down notes.

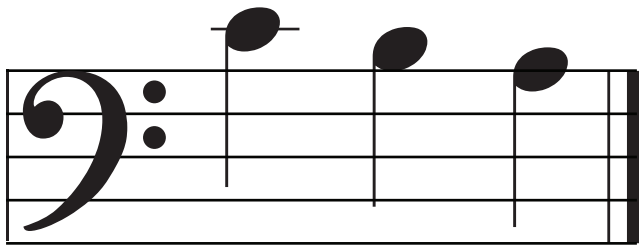


WATCH YOUR STEP!

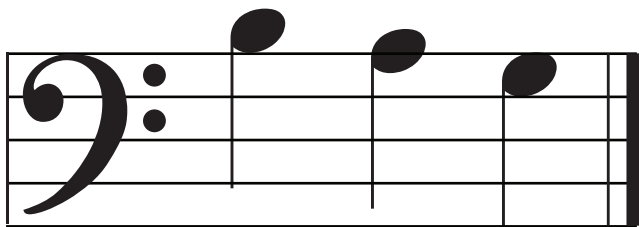
Name each note. Print the letter names on the keyboard. Draw an arrow to show the stepping up or stepping down notes.



— — —



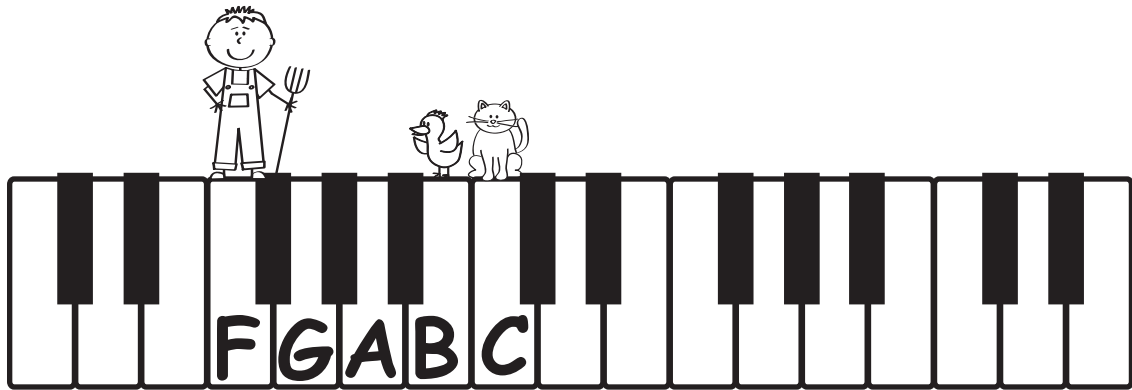
— — —



— — —



MY BASS CLEF NOTES

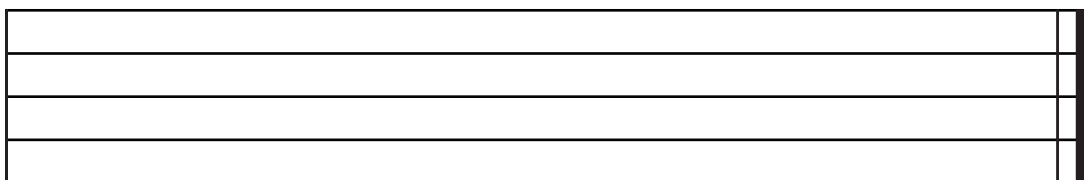


Draw these bass clef notes. Notice the number of beats so you know what kind of note to draw.

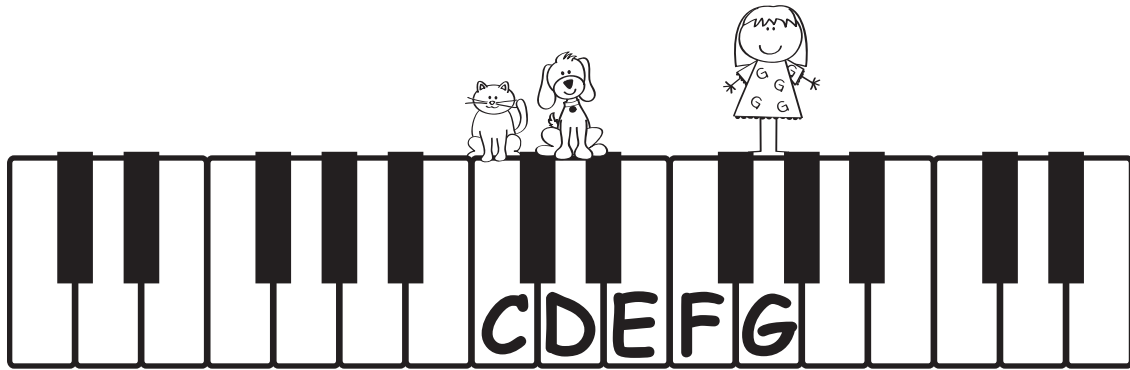


Note name	<u>B</u>	<u>C</u>	<u>A</u>	<u>F</u>	<u>G</u>
Number of beats	<u>2</u>	<u>1</u>	<u>4</u>	<u>2</u>	<u>3</u>

Draw four bass clefs.



MY TREBLE CLEF NOTES

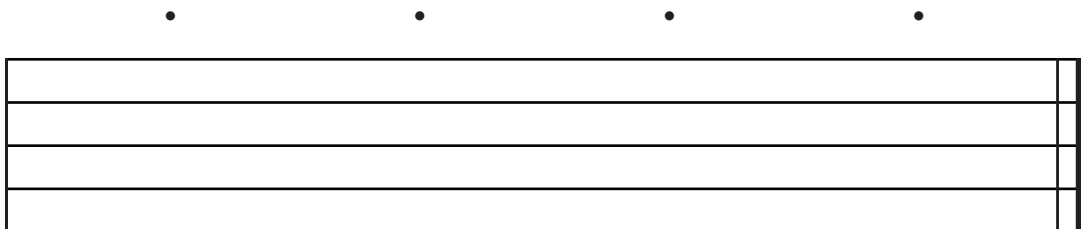


Draw these treble clef notes. Notice the number of beats so you know what kind of note to draw.

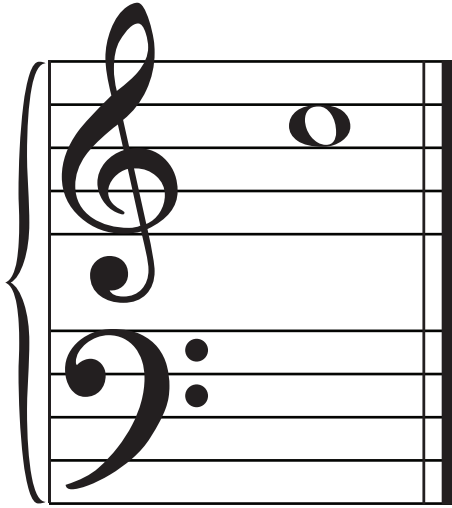


Note name	<u>D</u>	<u>G</u>	<u>F</u>	<u>C</u>	<u>E</u>
Number of beats	<u>2</u>	<u>1</u>	<u>3</u>	<u>1</u>	<u>4</u>

Draw four treble clefs.



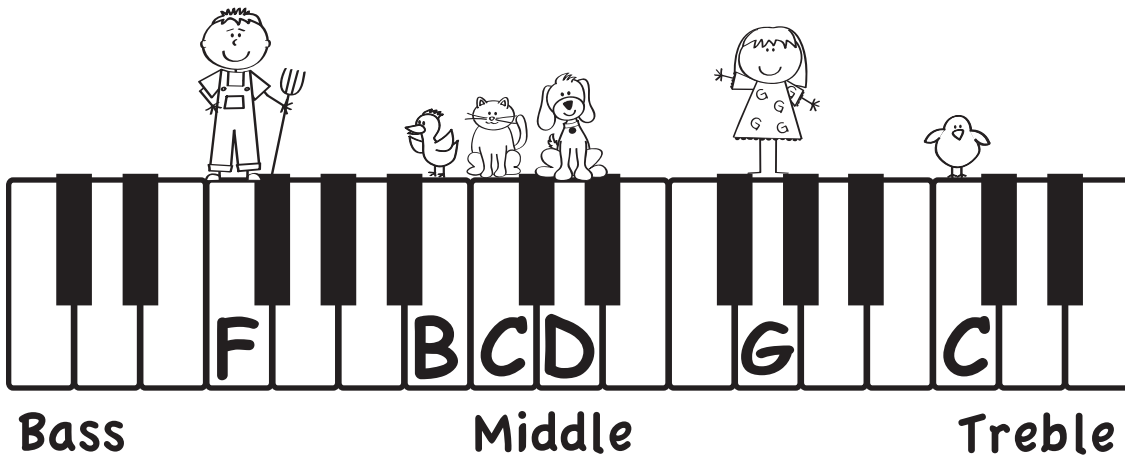
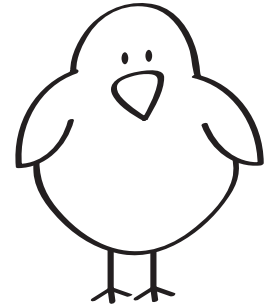
PEEP THE CHICK ~ TREBLE C



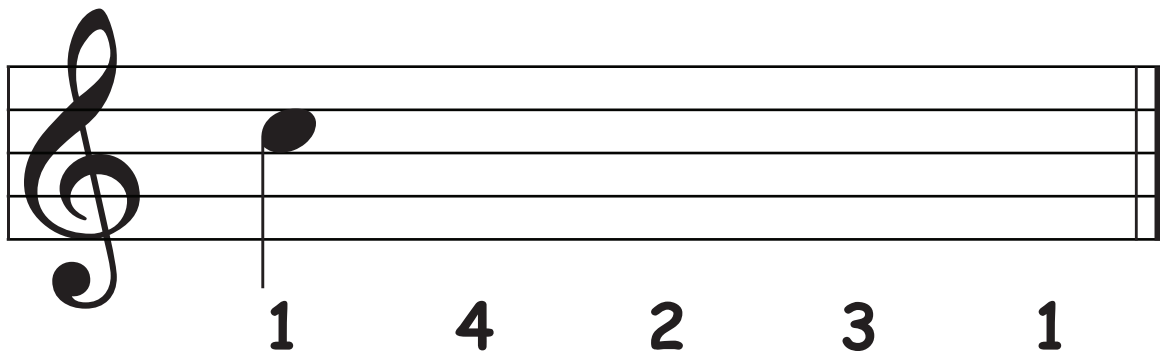
You will find **Peep the Chick** upstairs in the barn.

“Peep peep peep”, she says in a very high voice.

Peep the Chick will help you find **Space 3 Treble C**.



Practice drawing “space 3 treble C”.
The number tells you what kind of note to draw.

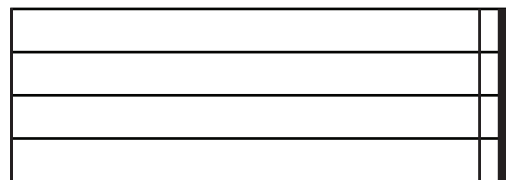
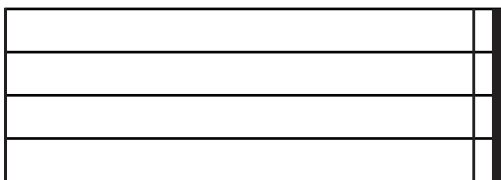


MATCH-UP

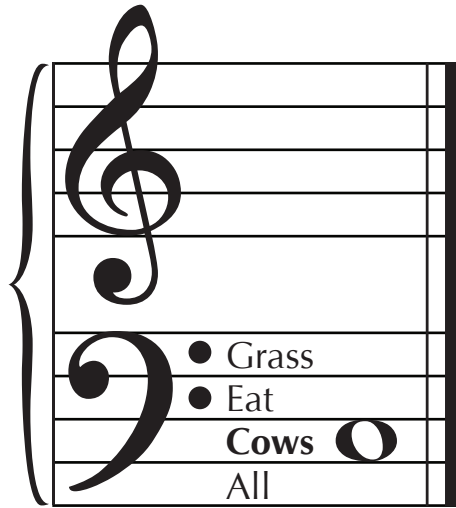
- 1 Name the notes in the blank.
- 2 Draw a line to the correct key on the piano.

A piano keyboard is shown with four cartoon characters on top: a cat, a dog, a girl, and a chick. A line connects the first note on a musical staff to the C key on the piano. The musical staff has a treble clef and six notes: a quarter note on the first space (labeled 'D'), a quarter note on the second space, a quarter note on the second line, a quarter note on the third space, a quarter note on the third line, and a quarter note on the fourth space.

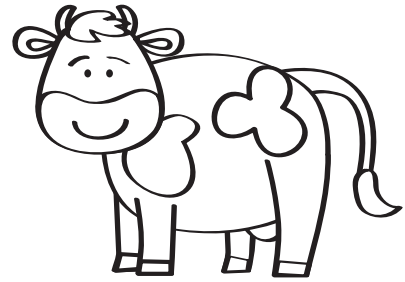
Draw a treble clef and treble C on each staff.



CLARA THE COW ~ BASS C

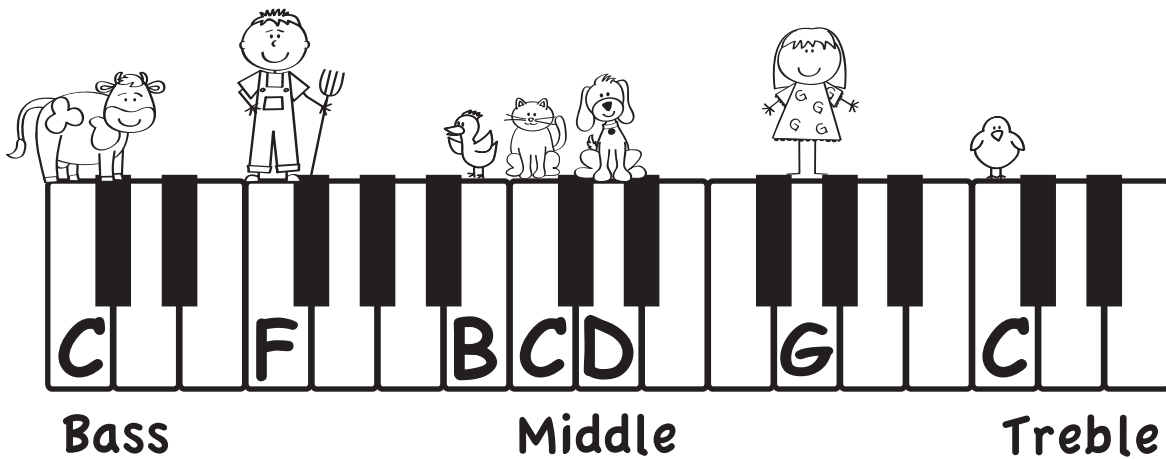


Clara the Cow has a low sounding "Moo" for a low **Bass C**.

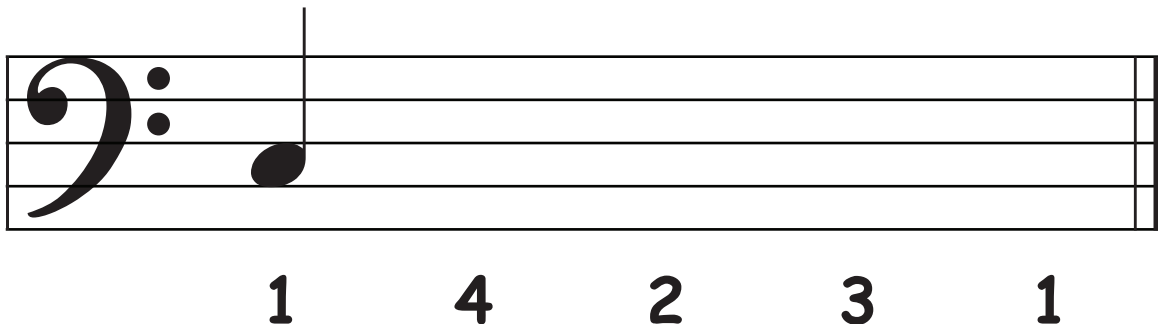


Point to each space and say, **All Cows Eat Grass.**

Clara's Bass C is in the **Cows** space.



Draw your own Bass Cs on the "Cow" space. The number tells you what kind of note to draw.



ALL COWS EAT GRASS

All Cows Eat Grass

A C E G

— — — —

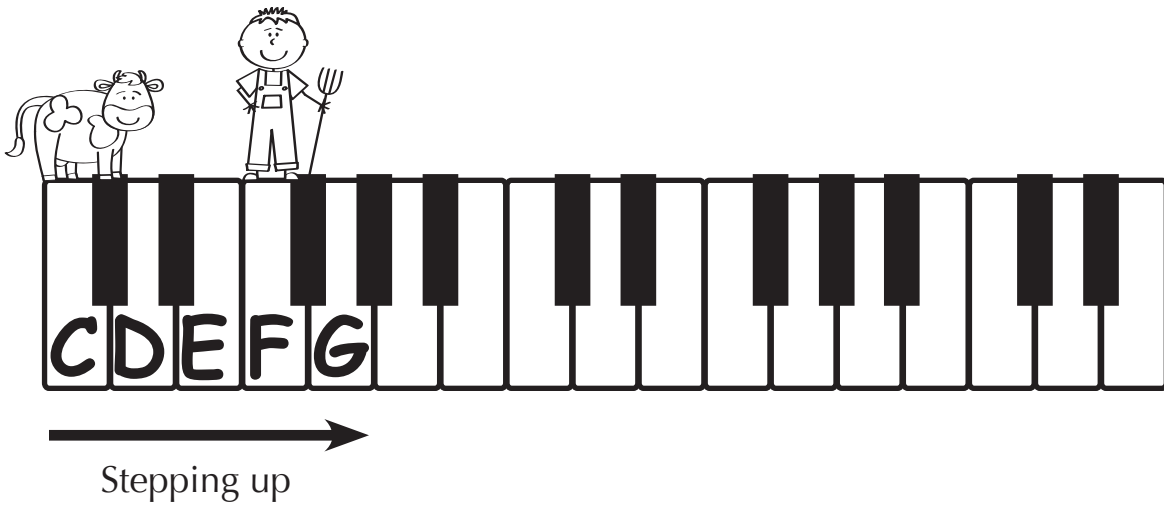
— — — —

Match the notes and letter names.

E C

A G

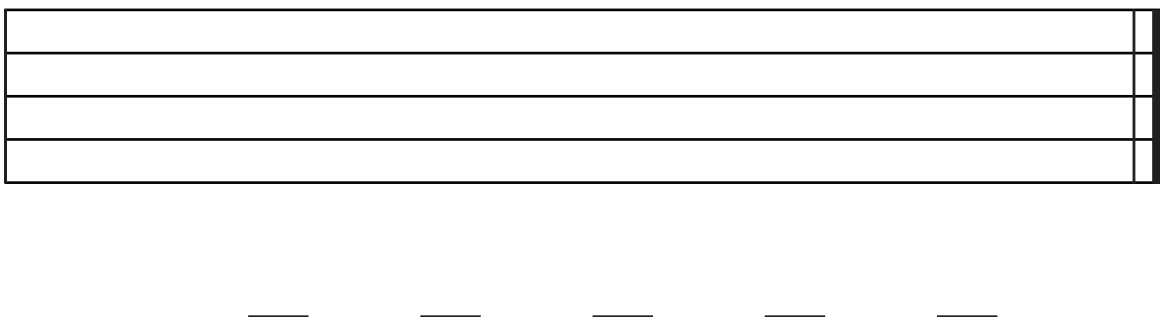
STEPPING UP



Name these notes.



Copy the bass clef and C - D - E - F - G stepping up notes.



CRAZY MATCHING

Middle C •



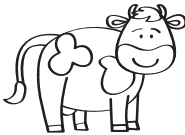
D •



Treble G •



B •



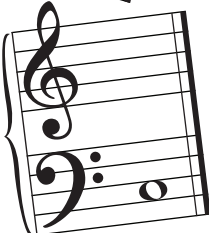
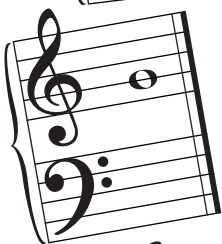
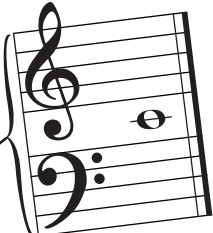
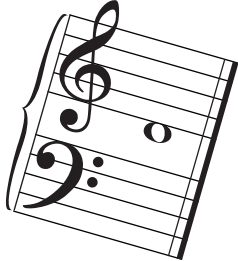
Bass C •



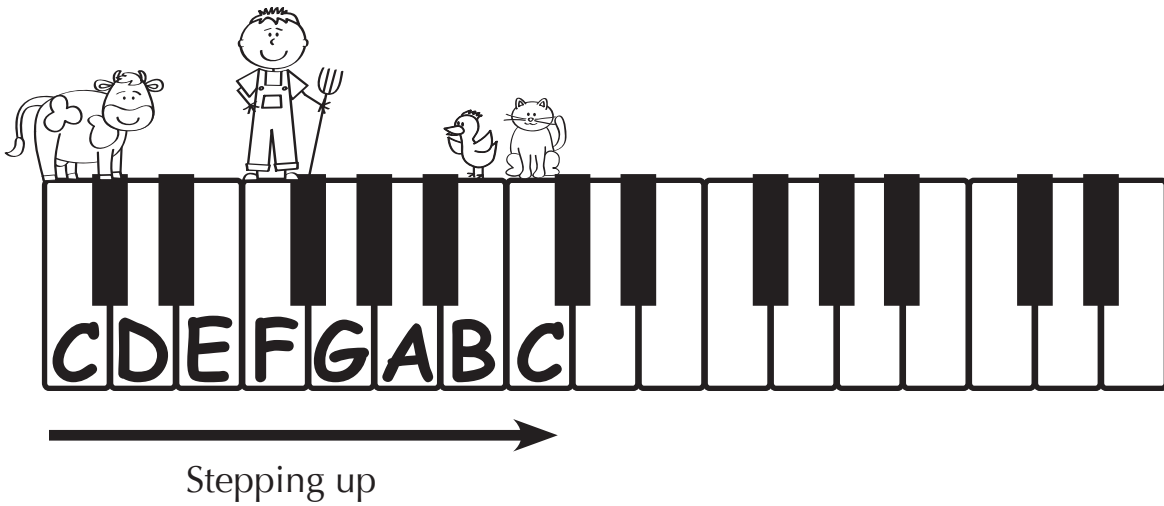
Bass F •



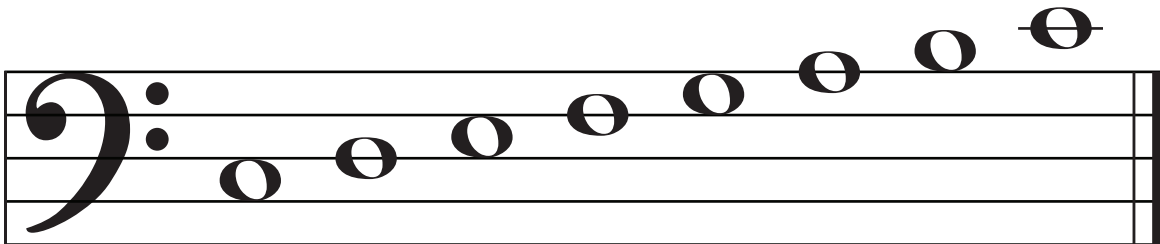
Treble C •



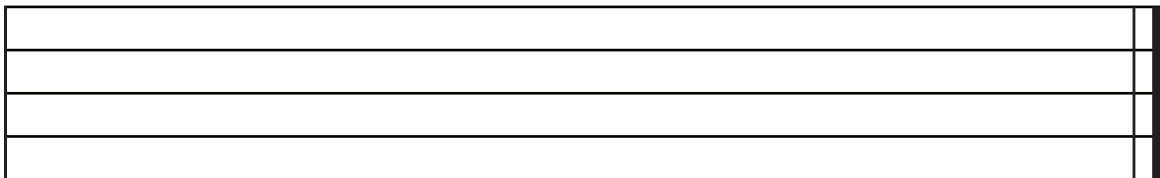
STEPPING ALL THE WAY



Name these notes.



Copy the bass clef and the stepping up notes.





ALL ABOUT STEMS

Did you notice that sometimes stems point up and sometimes they point down?

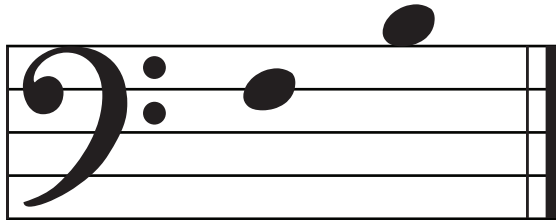


Down on the left.
Like a letter **p** for puppy.

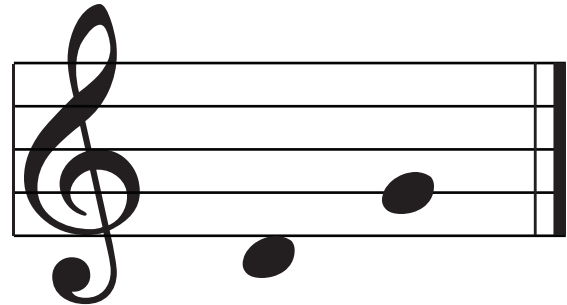


Up on the right.
Like a letter **d** for dog.

Draw down stems.

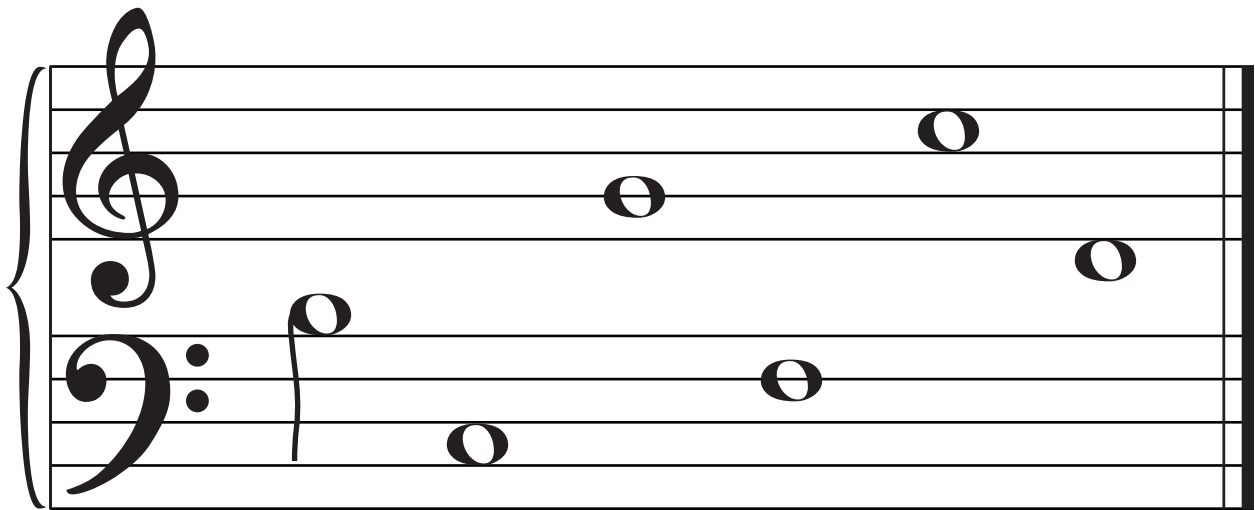


Draw up stems.

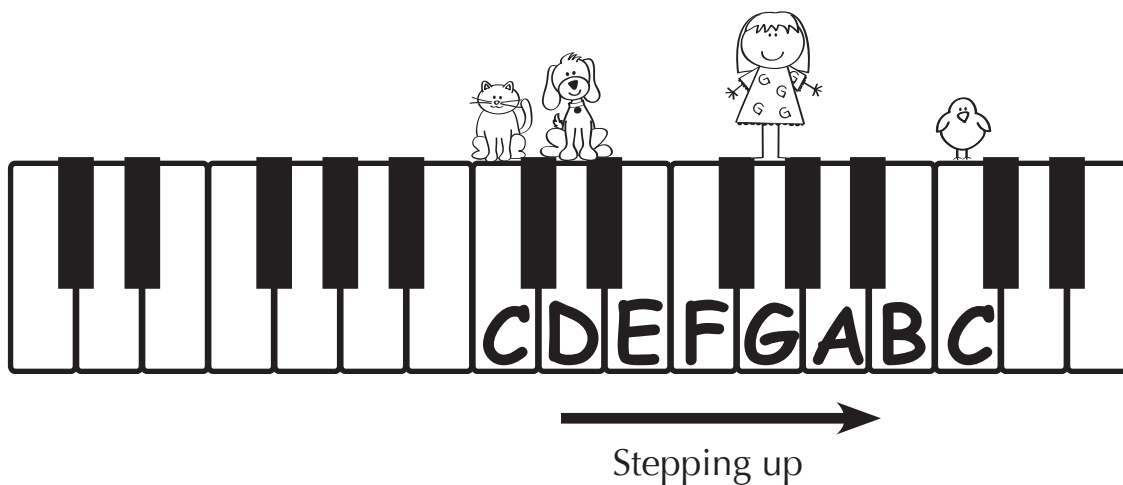


Always point the stem in the direction that covers the *most staff lines*.

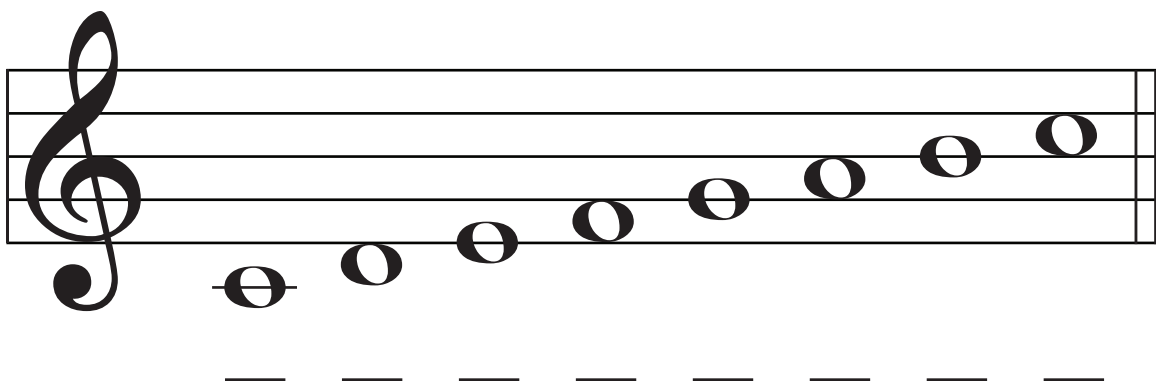
- 1 Change these *whole notes* into *half notes* by adding stems.
- 2 Name each note in the blank.



STEPPING UP TO TREBLE C



Name these stepping up notes.



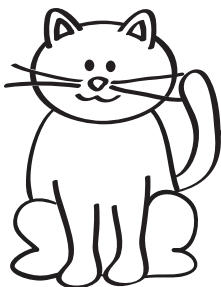
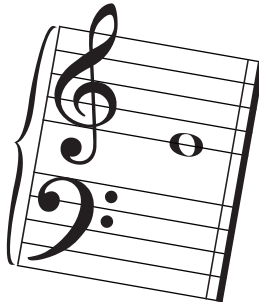
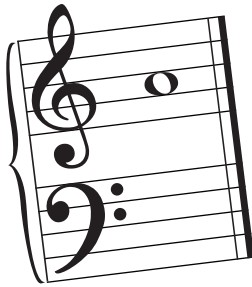
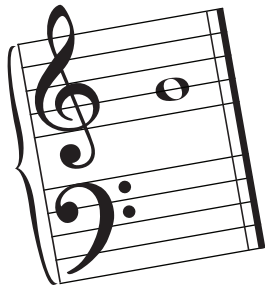
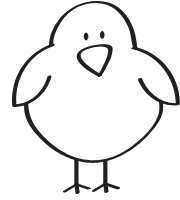
- ① Copy the treble clef and the stepping up notes.
- ② Add **stems** to make *half notes*.
- ③ Now **color the heads** to make *quarter notes*.



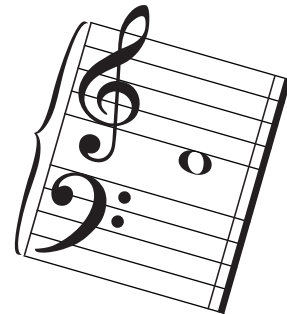
STEPPING UP TO PEEP THE CHICK

- 1 Name every note in the blank.
- 2 Connect the notes, beginning with *Middle C* then stepping up to *Treble C*.
- 3 Change every *whole note* into a *quarter note*.

End



Start



MY BIG TEST!

- 1 Add treble clef and bass clef in each grand staff (___ / 2)
- 2 Name every note (___ / 14)
- 3 Draw a stem on every note (___ / 14)

30

A grand staff consisting of two five-line staves. The top staff contains seven notes: G4 (first space), A4 (second space), B4 (third space), C5 (fourth space), D5 (fifth space), E5 (first line), and F5 (second line). The bottom staff contains seven notes: C3 (first space), D3 (first line), E3 (second space), F3 (second space), G3 (third space), A3 (third space), and B3 (fourth space).

— — — — — — —

A grand staff consisting of two five-line staves. The top staff contains two notes: G5 (fifth space) and A5 (first line). The bottom staff contains six notes: C4 (first space), D4 (first line), E4 (second space), F4 (second space), G4 (third space), and A4 (third space).

— — — — — — —